

HPLC Application

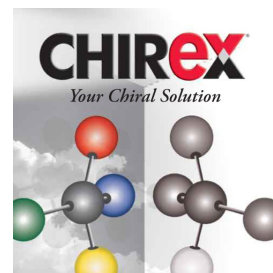
ID No.: 13600

Carbinoxamine

Column: Chirex[®] (S)-VAL and (R)-NEA, LC Column 250 x 4.6 mm, Ea
Dimensions: 250 x 4.6 mm ID
Order No: 00G-3014-E0
Elution Type: Isocratic
Eluent A: Hexane/Dichloroethane/Ethanol-TFA (40:50:10) ethanol-TFA 20:1
Gradient

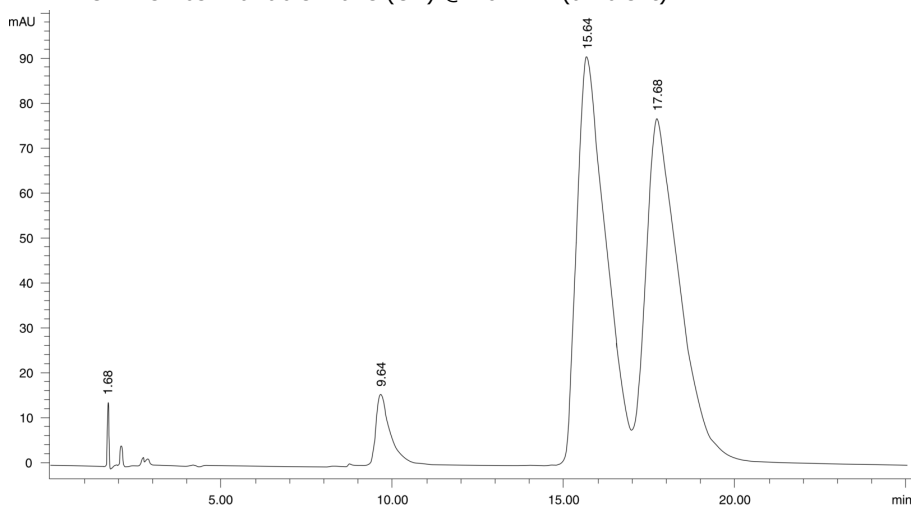
Step No.	Time (min)	Pct A
1	0	100

Profile:
Flow Rate: 1 mL/min
Col. Temp.: ambient
Detection: UV-Vis Abs.-Variable Wave.(UV) @ 262 nm (ambient)



Products used in this application:

CHIREX[®]



$\alpha = 1.15$

ANALYTES:

- 1 Carbinoxamine
Retention Time: 15.64 min
- 2 Carbinoxamine
Retention Time: 17.68 min

