

# HPLC Application

ID No.: 13624

## Diperodon

**Column:** Chirex<sup>®</sup> (S)-LEU and (R)-NEA, LC Column 250 x 4.6 mm, Ea

**Dimensions:** 250 x 4.6 mm ID

**Order No:** 00G-3020-E0

**Elution Type:** Isocratic

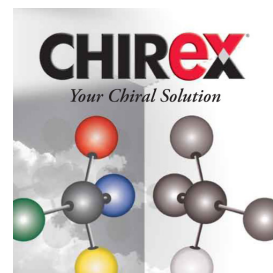
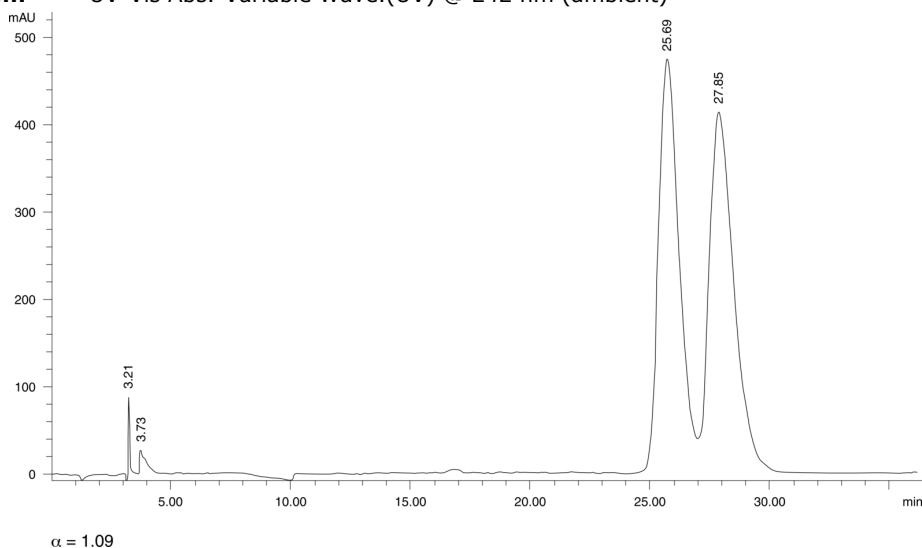
**Eluent A:** Hexane/Dichloroethane/Ethanol-TFA 77:20:3 ethanol-TFA 20:1

Gradient	Step No.	Time (min)	Pct A
<b>Profile:</b>	<b>1</b>	0	100

**Flow Rate:** 1 mL/min

**Col. Temp.:** ambient

**Detection:** UV-Vis Abs.-Variable Wave.(UV) @ 242 nm (ambient)



Products used in this application:

**CHIREX**<sup>®</sup>

### ANALYTES:

**1** Diperodon

Retention Time: 25.69 min

**2** Diperodon

Retention Time: 27.85 min

