

HPLC Application

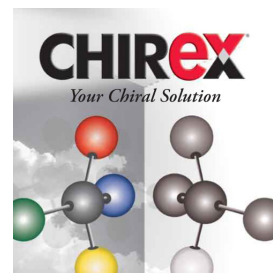
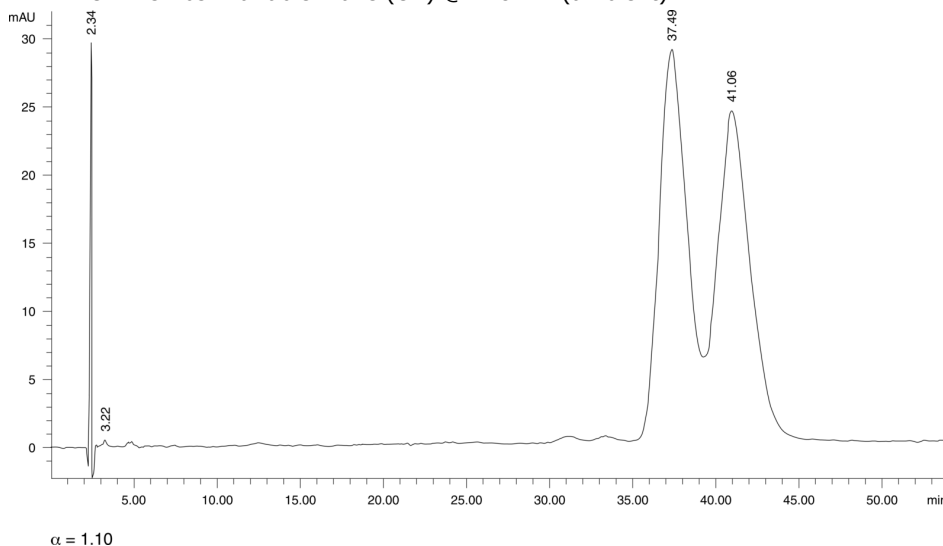
ID No.: 13654

Metaproterenol

Column: Chirex[®] (S)-VAL and (R)-NEA, LC Column 250 x 4.6 mm, Ea
Dimensions: 250 x 4.6 mm ID
Order No: 00G-3014-E0
Elution Type: Isocratic
Eluent A: Hexane/Dichloroethane/Ethanol-TFA (43:50:7) ethanol-TFA 20:1
Gradient

Step No.	Time (min)	Pct A
1	0	100

Profile:
Flow Rate: 0.7 mL/min
Col. Temp.: ambient
Detection: UV-Vis Abs.-Variable Wave.(UV) @ 278 nm (ambient)



Products used in this application:

CHIREX[®]

ANALYTES:

- 1 Metaproterenol
Retention Time: 2.34 min
- 2 Metaproterenol
Retention Time: 37.49 min
- 3 Metaproterenol
Retention Time: 41.06 min

