

# HPLC Application

ID No.: 13666

## Midodrine

**Column:** Chirex<sup>®</sup> (S)-VAL and (R)-NEA, LC Column 250 x 4.6 mm, Ea

**Dimensions:** 250 x 4.6 mm ID

**Order No:** 00G-3014-E0

**Elution Type:** Isocratic

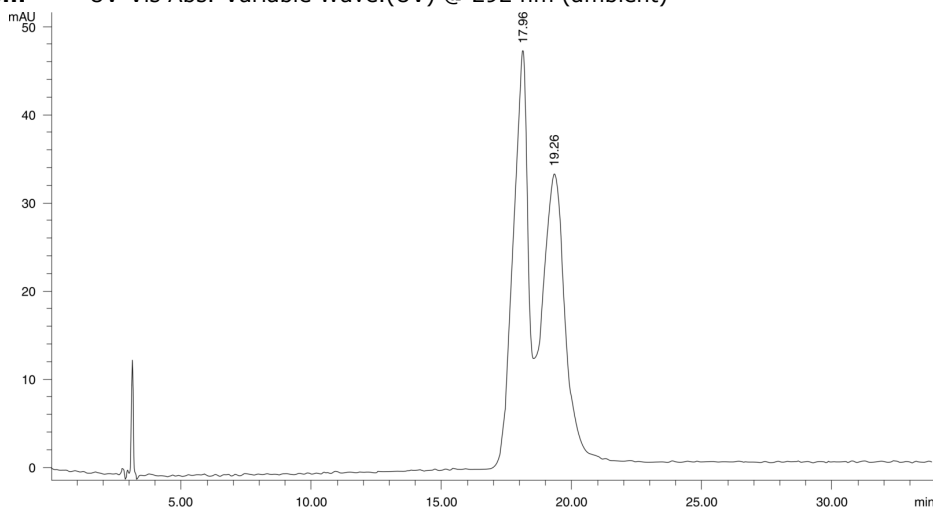
**Eluent A:** Hexane/Dichloroethane/Ethanol-TFA (57.5:35:7.5)

Gradient	Step No.	Time (min)	Pct A
<b>Profile:</b>	<b>1</b>	0	100

**Flow Rate:** 1 mL/min

**Col. Temp.:** ambient

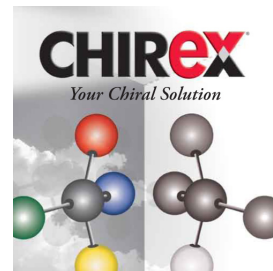
**Detection:** UV-Vis Abs.-Variable Wave.(UV) @ 292 nm (ambient)



$\alpha = 1.09$

### ANALYTES:

- 1** Midodrine  
Retention Time: 17.96 min
- 2** Midodrine  
Retention Time: 19.26 min



Products used in this application:

**CHIREX**<sup>®</sup>

