

HPLC Application

ID No.: 13857

Octopamine

Column: Chirex® 3126 (D)-penicillamine, LC Column 150 x 4.6 mm, Ea

Dimensions: 150 x 4.6 mm ID

Order No: 00F-3126-E0

Elution Type: Isocratic

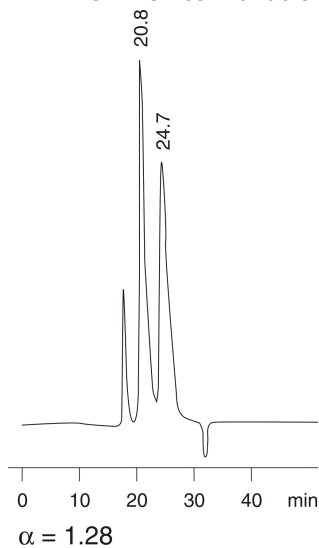
Eluent A: 5 mM Copper (II) acetate in water [pH 6.0]

Gradient	Step No.	Time (min)	Pct A
Profile:	1	0	100

Flow Rate: 0.2 mL/min

Col. Temp.: ambient

Detection: UV-Vis Abs.-Variable Wave.(UV) @ 280 nm (ambient)



Products used in this application:

CHIREX®

ANALYTES:

- 1 Octopamine
Retention Time: 20.84 min
- 2 Octopamine
Retention Time: 24.68 min