

# HPLC Application

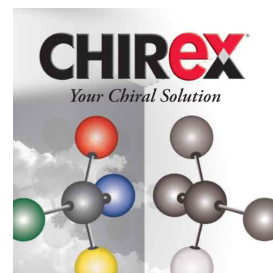
ID No.: 13871

## Synephrine

**Column:** Chirex® 3126 (D)-penicillamine, LC Column 250 x 4.6 mm, Ea  
**Dimensions:** 250 x 4.6 mm ID  
**Order No:** 00G-3126-E0  
**Elution Type:** Isocratic  
**Eluent A:** 1 mM Copper (II) acetate and 20 mM ammonium acetate in water [pH 6.5]  
**Gradient**

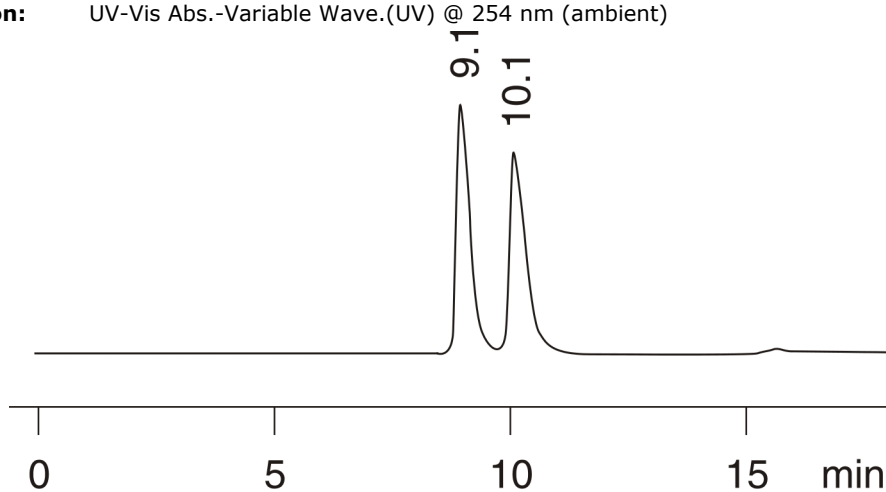
Step No.	Time (min)	Pct A
1	0	100

**Profile:**  
**Flow Rate:** 0.8 mL/min  
**Col. Temp.:** ambient  
**Detection:** UV-Vis Abs.-Variable Wave.(UV) @ 254 nm (ambient)



Products used in this application:

**CHIREX**®



$$\alpha = 1.19$$

### ANALYTES:

- 1 Synephrine  
Retention Time: 3.145 min
- 2 Synephrine  
Retention Time: 10.301 min

