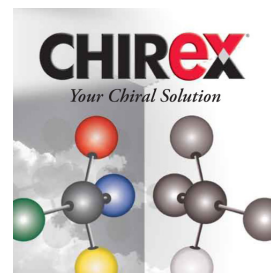


## O-Pyrene-1-carbonyl 2-hydroxybutyric acid

**Column:** Chirex® (S)-LEU and DNAn, LC Column 250 x 4.6 mm, Ea  
**Dimensions:** 250 x 4.6 mm ID  
**Order No:** 00G-3011-E0  
**Elution Type:** Isocratic  
**Eluent A:** 0.1 M Ammonium acetate in methanol  
**Eluent B:** Dioxane  
**Gradient**

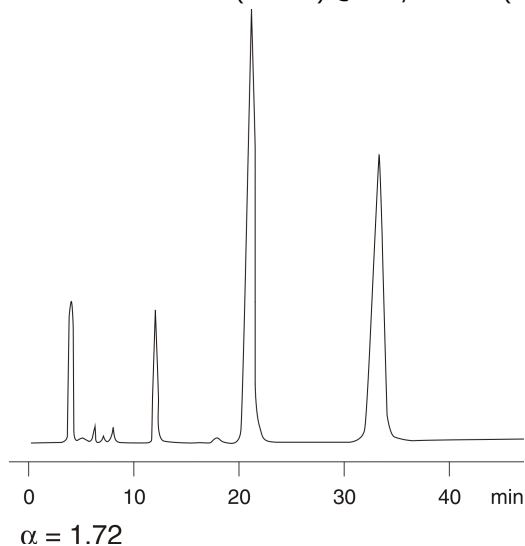
Step No.	Time (min)	Pct A	Pct B
1	0	50	50

**Profile:**  
**Flow Rate:** 1 mL/min  
**Col. Temp.:** ambient  
**Detection:** Fluorescence (FLUOR) @ 350/410 nm (ambient)



Products used in this application:

**CHIREX**



### ANALYTES:

- 1 O-Pyrene-1-carbonyl 2-hydroxybutyric acid
- 2 O-Pyrene-1-carbonyl 2-hydroxybutyric acid

