

HPLC Application

ID No.: 14016

Serine

Column: Chirex[®] 3126 (D)-penicillamine, LC Column 150 x 4.6 mm, Ea

Dimensions: 150 x 4.6 mm ID

Order No: 00F-3126-E0

Elution Type: Isocratic

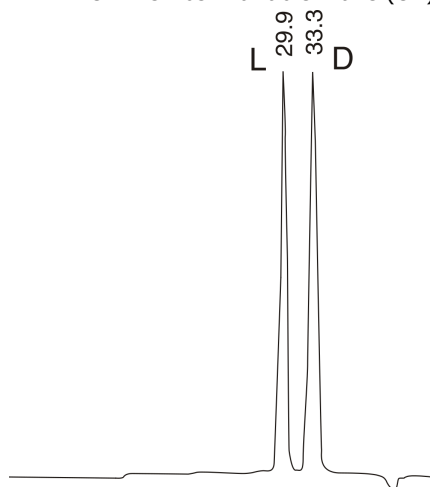
Eluent A: 1 mM Copper (II) sulfate in water

Gradient	Step No.	Time (min)	Pct A
Profile:	1	0	100

Flow Rate: 0.2 mL/min

Col. Temp.: ambient

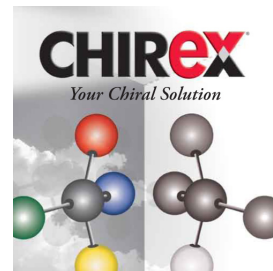
Detection: UV-Vis Abs.-Variable Wave.(UV) @ 254 nm (ambient)



$$\alpha = 1.17$$

ANALYTES:

- 1** L-Serine
Retention Time: 29.933 min
- 2** D-Serine
Retention Time: 33.278 min



Products used in this application:

CHIREX[®]