

# HPLC Application

ID No.: 14047

## Glutamic acid

**Column:** Chirex® 3126 (D)-penicillamine, LC Column 150 x 4.6 mm, Ea

**Dimensions:** 150 x 4.6 mm ID

**Order No:** 00F-3126-E0

**Elution Type:** Isocratic

**Eluent A:** 2 mM Copper (II) sulfate in water

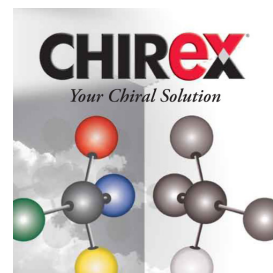
**Eluent B:** Methanol

Gradient	Step No.	Time (min)	Pct A	Pct B
Profile:	1	0	85	15

**Flow Rate:** 1 mL/min

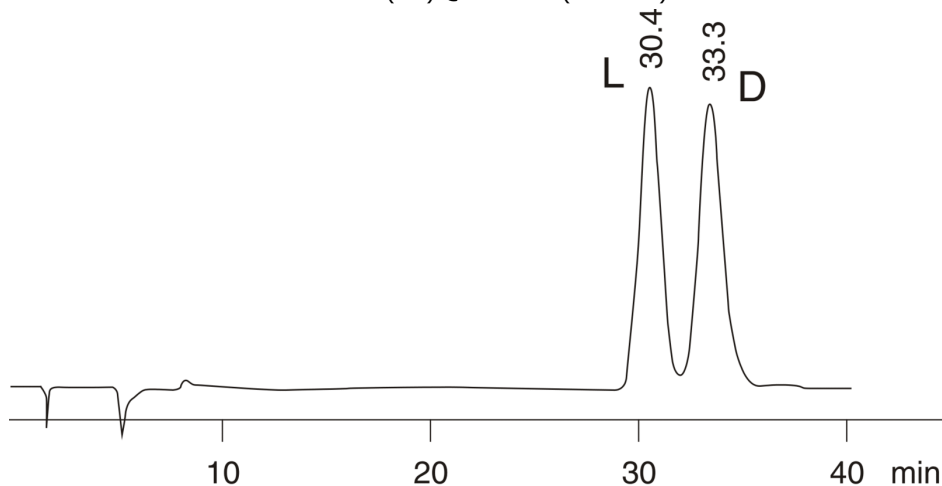
**Col. Temp.:** ambient

**Detection:** UV-Vis Abs.-Variable Wave.(UV) @ 254 nm (ambient)



Products used in this application:

**CHIREX**



$$\alpha = 1.11$$

### ANALYTES:

- 1** L-Glutamic acid  
Retention Time: 30.433 min
- 2** D-Glutamic acid  
Retention Time: 33.317 min

