

# HPLC Application

ID No.: 14085

## Cystine

**Column:** Chirex® 3126 (D)-penicillamine, LC Column 150 x 4.6 mm, Ea

**Dimensions:** 150 x 4.6 mm ID

**Order No:** 00F-3126-E0

**Elution Type:** Isocratic

**Eluent A:** 2 mM Copper (II) sulfate in water

**Eluent B:** Isopropanol

Gradient Profile:	Step No.	Time (min)	Pct A	Pct B
	1	0	95	5

**Flow Rate:** 1 mL/min

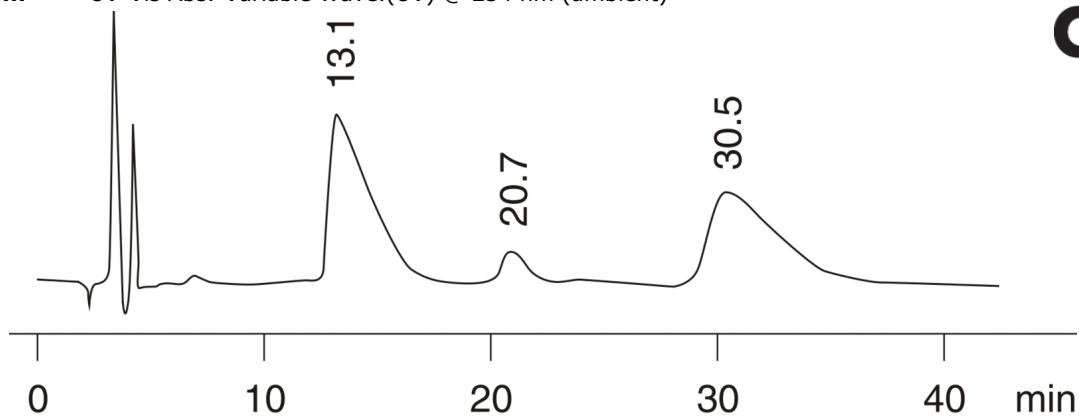
**Col. Temp.:** ambient

**Detection:** UV-Vis Abs.-Variable Wave.(UV) @ 254 nm (ambient)



Products used in this application:

**CHIREX**®



$$\alpha = 2.47$$

### ANALYTES:

- 1 Cystine  
Retention Time: 13.1 min
- 2 Cystine  
Retention Time: 20.77 min
- 3 Cystine  
Retention Time: 30.7 min