

HPLC Application

ID No.: 14106

Leucic acid

Column: Chirex® 3126 (D)-penicillamine, LC Column 50 x 4.6 mm, Ea

Dimensions: 50 x 4.6 mm ID

Order No: 00B-3126-E0

Elution Type: Isocratic

Eluent A: 2 mM Copper (II) sulfate in water

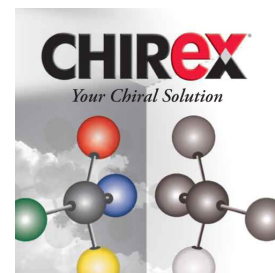
Eluent B: Methanol

| Gradient | Step No. | Time (min) | Pct A | Pct B |
|----------|----------|------------|-------|-------|
| Profile: | 1 | 0 | 70 | 30 |

Flow Rate: 1 mL/min

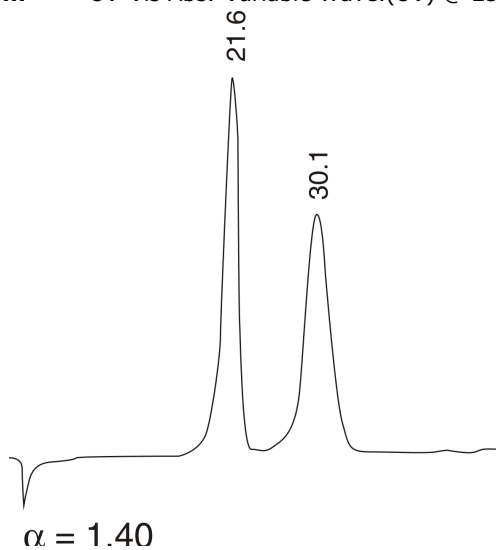
Col. Temp.: ambient

Detection: UV-Vis Abs.-Variable Wave.(UV) @ 254 nm (ambient)



Products used in this application:

CHIREX®



ANALYTES:

- 1 Leucic acid
Retention Time: 21.593 min
- 2 Leucic acid
Retention Time: 30.06 min