

HPLC Application

ID No.: 14226

Siberian Ginseng extract on Synergi Polar-RP

Column: Synergi[™] 4 μ m Polar-RP 80 Å, LC Column 150 x 4.6 mm, Ea

Dimensions: 150 x 4.6 mm ID

Order No: 00F-4336-E0

Elution Type: Gradient

Eluent A: Water

Eluent B: Acetonitrile

Gradient Profile:	Step No.	Time (min)	Pct A	Pct B
	1	0	90	10
	2	20	78	22

Flow Rate: 1 mL/min

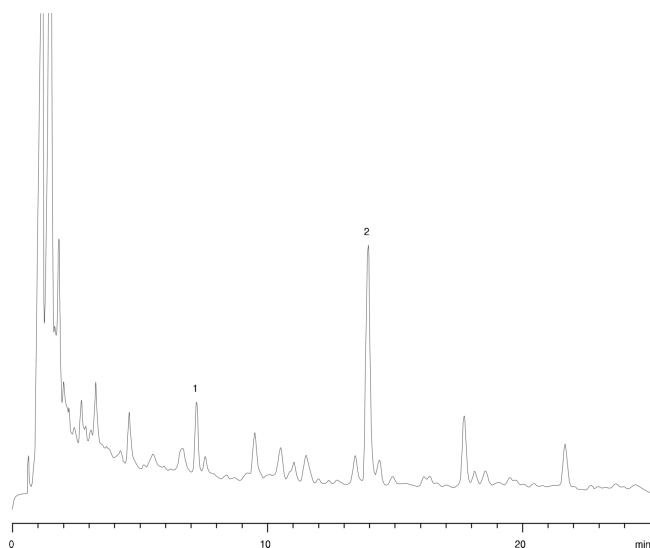
Col. Temp.: ambient

Detection: UV-Vis Abs.-Variable Wave.(UV) @ 220 nm (ambient)

Analyst Note: SecurityGuard[™] Guard Cartridge System extends column lifetime.

- SecurityGuard Cartridges, POLAR-RP 4 x 3.0mm, 10/Pk Part No.: AJ0-6076

- Holder Part No.: KJ0-4282



ANALYTES:

1 Eleutheroside B

2 Eleutheroside E

