

Complex Sugars on Luna Amino

Column: Luna® 5 µm NH₂ 100 Å, LC Column 250 x 4.6 mm, Ea

Dimensions: 250 x 4.6 mm ID

Order No: 00G-4378-E0

Elution Type: Isocratic

Eluent A: Acetonitrile

Eluent B: Water

Gradient Profile:	Step No.	Time (min)	Pct A	Pct B
	1	0	65	35

Flow Rate: 3 mL/min

Col. Temp.: 40 °C

Detection: Refractive Index (RI) @ (40 °C)

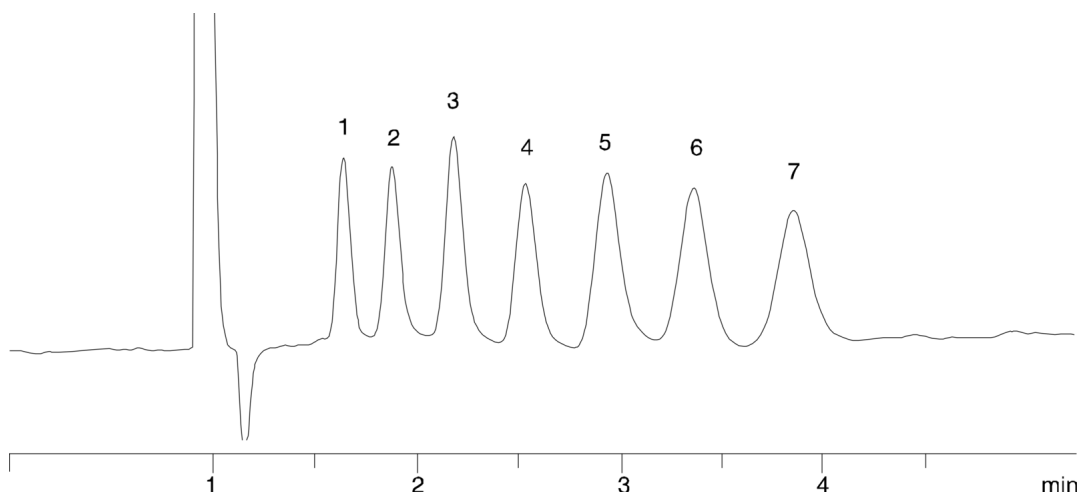
Analyst Note: SecurityGuard™ Guard Cartridge System extends column lifetime.

- SecurityGuard Cartridges, NH₂ 4 x 3.0mm, 10/Pk Part No.: AJ0-4302

- Holder Part No.: KJ0-4282



Products used in this application:



ANALYTES:

- 1 Glucose
- 2 Maltose
- 3 Maltotriose
- 4 Maltotetraose
- 5 Maltopentaose
- 6 Maltohexaose
- 7 Maltoheptaose

