

HPLC Application

ID No.: 14334

Cytochrom C Bovine

Column: Luna® 3 µm C18(2) 100 Å, LC Column 150 x 0.5 mm, Capillary, Ea

Dimensions: 150 x 0.5 mm ID

Order No: 00F-4251-AF

Elution Type: Gradient

Eluent A: 0.01% TFA in water

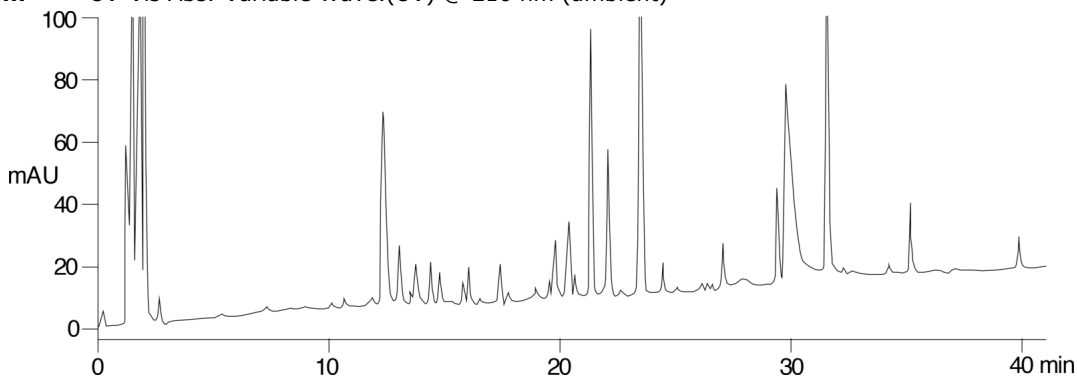
Eluent B: 0.008% TFA in CH₃CN

Gradient Profile:	Step No.	Time (min)	Pct A	Pct B
	1	0	95	5
	2	60	40	60
	3	60.01	95	5
	4	70	95	5

Flow Rate: 15 µL/min

Col. Temp.: 40 °C

Detection: UV-Vis Abs.-Variable Wave.(UV) @ 210 nm (ambient)



Products used in this application:



ANALYTES:

- 1 Cytochrom C Bovine tryptic digest

