

Jupiter Proteo Batch Reproducibility (Batch 4)

Column: Jupiter® 4 µm Proteo 90 Å, LC Column 150 x 4.6 mm, Ea

Dimensions: 150 x 4.6 mm ID

Order No: 00F-4396-E0

Elution Type: Gradient

Eluent A: 0.1% TFA in Water

Eluent B: 0.08% TFA in Acetonitrile

| Gradient Profile: | Step No. | Time (min) | Pct A | Pct B |
|-------------------|----------|------------|-------|-------|
| | 1 | 0 | 95 | 5 |
| | 2 | 20 | 50 | 50 |

Flow Rate: 1 mL/min

Col. Temp.: ambient

Detection: UV-Vis Abs.-Variable Wave.(UV) @ 210 nm (ambient)

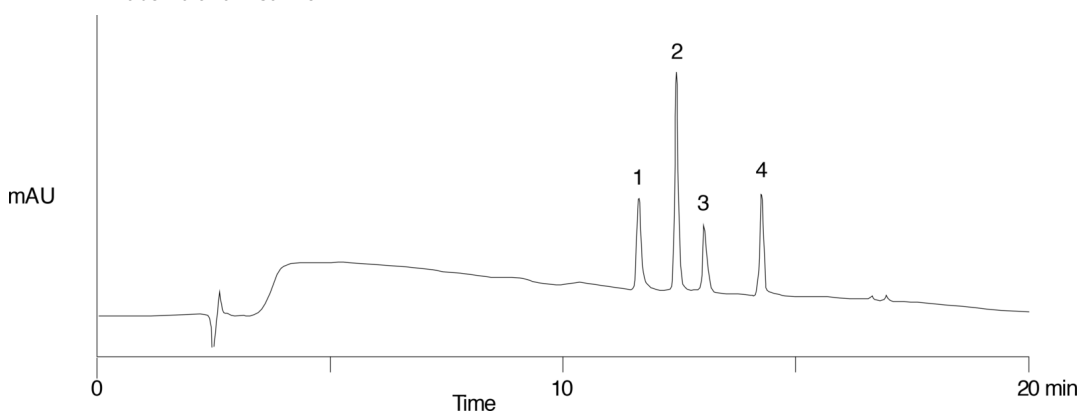
Analyst Note: SecurityGuard™ Guard Cartridge System extends column lifetime.

- SecurityGuard Cartridges, C12 4 x 3.0mm, 10/Pk Part No.: AJ0-6074

- Holder Part No.: KJ0-4282



Products used in this application:



ANALYTES:

- 1 Bradykinin
- 2 Angiotensin III
- 3 Neurotensin
- 4 Eledoisin

