

GC Application

ID No.: 14441

Volatile Organics by GC/MS (EPA Method 8260B)

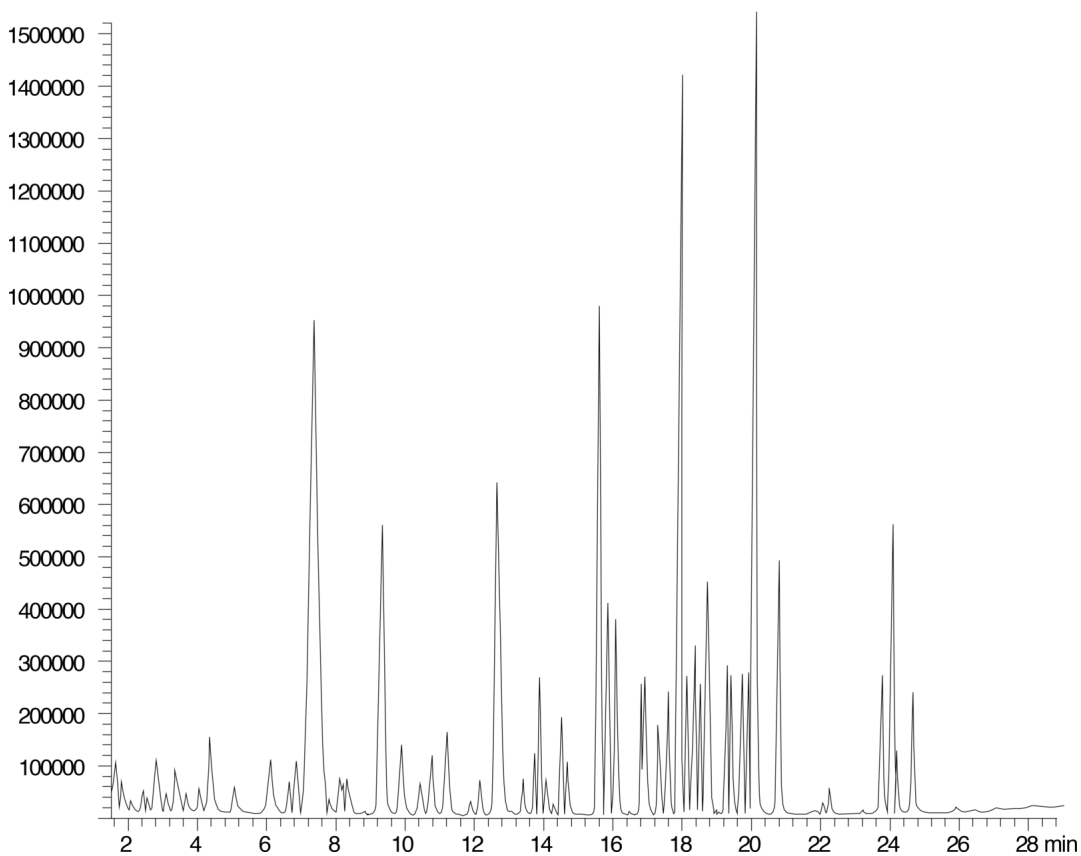
Column: Zebtron™ ZB-624, GC Cap. Column 60 m x 0.53 mm x 3.00 µm, Ea
Phase: 6% Cyanopropylphenyl 94% Dimethylpolysiloxane
Dimensions: 60 meters x 0.53 mm x 3 µm
Order No: 7KK-G005-36
Oven Profile: 40°C for 1min to 45°C @ 1°C/min (hold 2min), to 210°C @8°C/min (hold 2min)
Carrier Gas: Constant Pressure Helium, 20 mL/min
Injection: Split :1 1 µL @ 200°C
Detection: Mass Spectrometer (MS) (300°C)
Detector Info: Solvent delay = 1.50 minutes
Full scan from m/z 42 to 260



Products used in this application:



14441



Volatile Organics by GC/MS (EPA Method 8260B)

ANALYTES:

1	Pentafluorobenzene	41	1,3-Dichloropropane
2	Dichlorodifluoromethane	42	Tetrachloroethene
3	Chloromethane	43	Dibromochloromethane
4	Vinyl chloride	44	1,2-Dibromoethane
5	Bromomethane	45	Chlorobenzene-d5
6	Chloroethane	46	Chlorobenzene
7	Trichlorofluoromethane	47	1,1,1,2-Tetrachloroethane
8	Diethyl ether	48	Ethylbenzene
9	Acetone	49	m/p-Xylene
10	1,1-Dichloroethene	50	o-Xylene
11	Methylene chloride	51	Styrene
12	Carbon disulfide	52	Bromoform
13	Methyl tert-butyl ether	53	Isopropylbenzene
14	trans-1,2-Dichloroethene	54	1,1,2,2-Tetrachloroethane
15	1,1-Dichloroethane	55	BFB
16	2-Butanone	56	1,2,3-Trichloropropane
17	2,2-Dichloropropane	57	Bromobenzene
18	cis-1,2-Dichloroethene	58	n-Propylbenzene
19	Chloroform	59	2-Chlorotoluene
20	Bromochloromethane	60	4-Chlorotoluene
21	Tetrahydrofuran	61	1,3,5-Trimethylbenzene
22	1,1,1-Trichloroethane	62	tert-Butylbenzene
23	Dibromofluoromethane	63	1,2,4-Trimethylbenzene
24	1,1-Dichloropropene	64	sec-Butylbenzene
25	Carbon tetrachloride	65	4-Isopropyltoluene
26	Benzene	66	1,3-Dichlorobenzene
27	1,2-Dichloroethane	67	1,4-Dichlorobenzene-d4
28	1,4-Difluorobenzene	68	1-4-Dichlorobenzene
29	Trichloroethene	69	n-Butylbenzene
30	1,2-Dichloropropane	70	1,2-Dichlorobenzene
31	Bromodichloromethane	71	1,2-Dibromo-3-chloropropane
32	Dibromomethane	72	1,2,4-Trichlorobenzene
33	2-Chloroethyl vinyl ether	73	Hexachlorobutadiene
34	MIBK	74	Naphthalene
35	cis-1,3-Dichloropropene	75	1,2,3-Trichlorobenzene
36	Toluene-d8		
37	Toluene		
38	trans-1,3-Dichloropropene		
39	1,1,2-Trichloroethane		
40	2-Hexanone		

