

# HPLC Application

ID No.: 14761

## Proteins on Jupiter C4 300A

**Column:** Jupiter<sup>®</sup> 5  $\mu$ m C4 300 Å, LC Column 150 x 4.6 mm, Ea

**Dimensions:** 150 x 4.6 mm ID

**Order No:** 00F-4167-E0

**Elution Type:** Gradient

**Eluent A:** 0.1% TFA : H<sub>2</sub>O

**Eluent B:** 0.08% TFA : ACN

Gradient Profile:	Step No.	Time (min)	Pct A	Pct B
	1	0.5	95	5
	2	20	20	80

**Flow Rate:** 1 mL/min

**Col. Temp.:** ambient

**Detection:** UV-Vis Abs.-Variable Wave.(UV) @ nm (ambient)

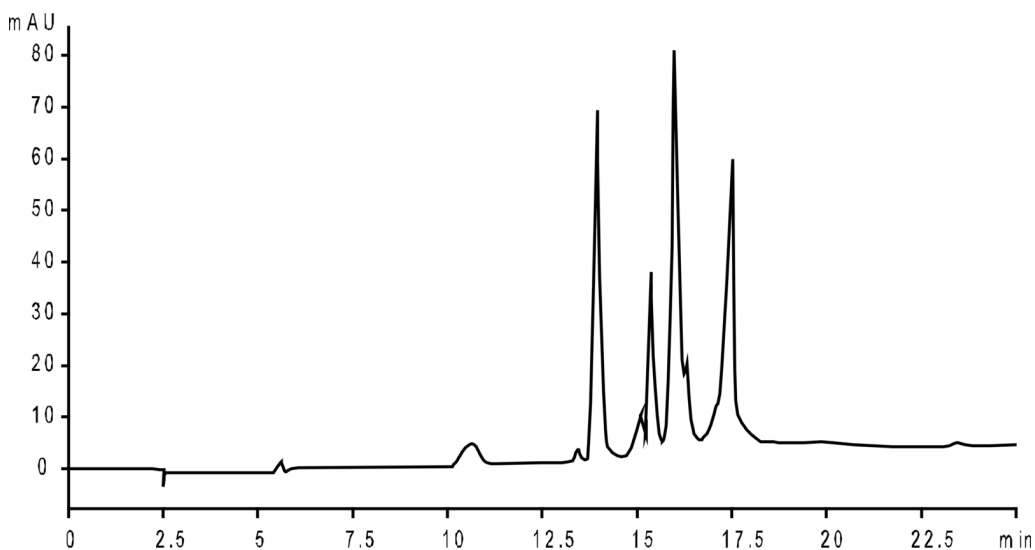
**Analyst Note:** SecurityGuard<sup>™</sup> Guard Cartridge System extends column lifetime.

- SecurityGuard Cartridges, Widedpore C4 4 x 3.0mm, 10/Pk Part No.: AJ0-4330

- Holder Part No.: KJ0-4282



Products used in this application:



### ANALYTES:

- 1 BSA
- 2 Glutamic dehydrogenase
- 3 B-Galactosidase
- 4 Ovalbumin

