

GC Application

ID No.: 14792

Aliphatic Amines on ZB-5

Column: Zebron[™] ZB-5, GC Cap. Column 30 m x 0.25 mm x 0.25 μm, Ea

Phase: 5% Phenyl 95% Dimethylpolysiloxane

Dimensions: 30 meters x 0.25 mm x 0.25 μm

Order No: 7HG-G002-11

Oven Profile: 40°C for 3min to 130°C at 30°C/min to 220°C at 15°C/min

Carrier Gas: Constant Flow Helium, 1 mL/min

Injection: Split 15:1 1 μL @ 220°C

Detection: Mass Selective (MSD) (180°C)

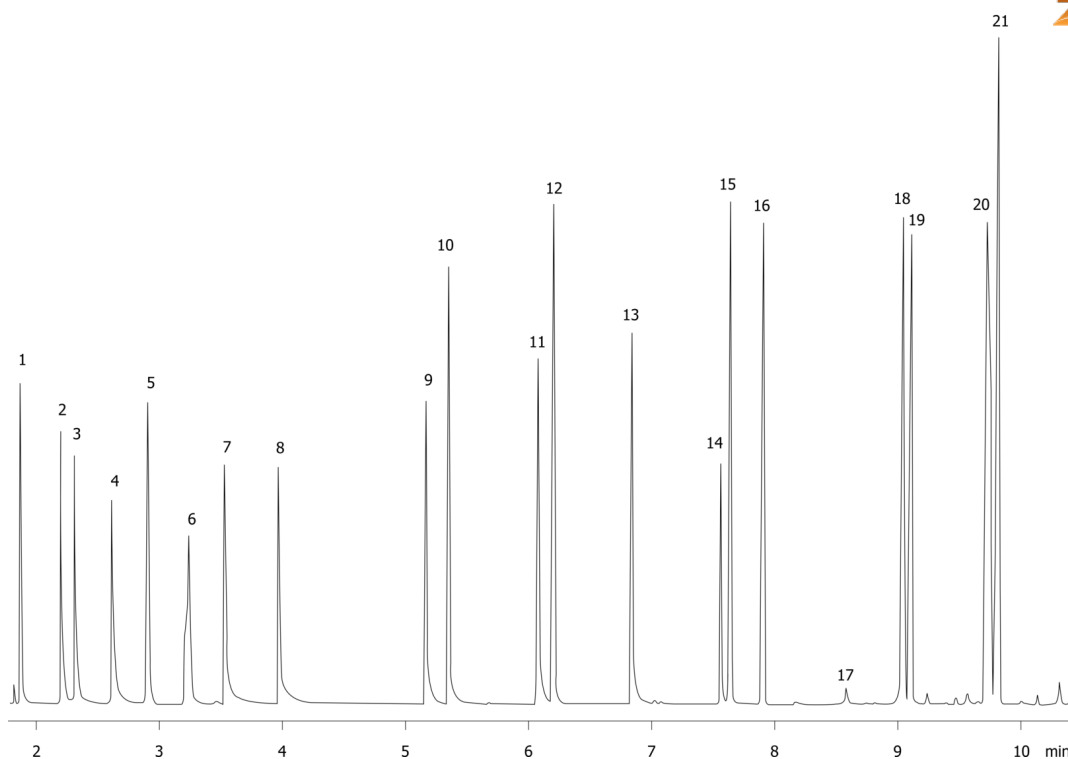
Analyst Note: Analytes are at 1.58mg/mL each.



Products used in this application:



14792



Aliphatic Amines on ZB-5

ANALYTES:

- 1 tert-Butylamine
- 2 sec-Butylamine
- 3 Isobutylamine
- 4 n-Butylamine
- 5 Diisopropylamine
- 6 Triethylamine
- 7 Isopentylamine
- 8 Pentylamine
- 9 Hexylamine
- 10 Cyclohexylamine
- 11 Heptylamine
- 12 Dibutylamine
- 13 Octylamine
- 14 Nonylamine
- 15 Dipentylamine
- 16 Tributylamine
- 17 Decylamine
- 18 contaminant
- 19 Dihexylamine
- 20 Dicyclohexylamine
- 21 contaminant

