

GC Application

ID No.: 14815

Ethylene and Propylene Glycol in Water on ZB-WAX

Column: Zebron[™] ZB-WAX, GC Cap. Column 30 m x 0.53 mm x 1.00 μ m, Ea

Phase: Polyethylene Glycol (PEG)

Dimensions: 30 meters x 0.53 mm x 1 μ m

Order No: 7HK-G007-22

Oven Profile: 80°C for 1 min to 200°C at 8°C/min for 5 min.

Carrier Gas: Constant Flow Helium, 6.6 mL/min

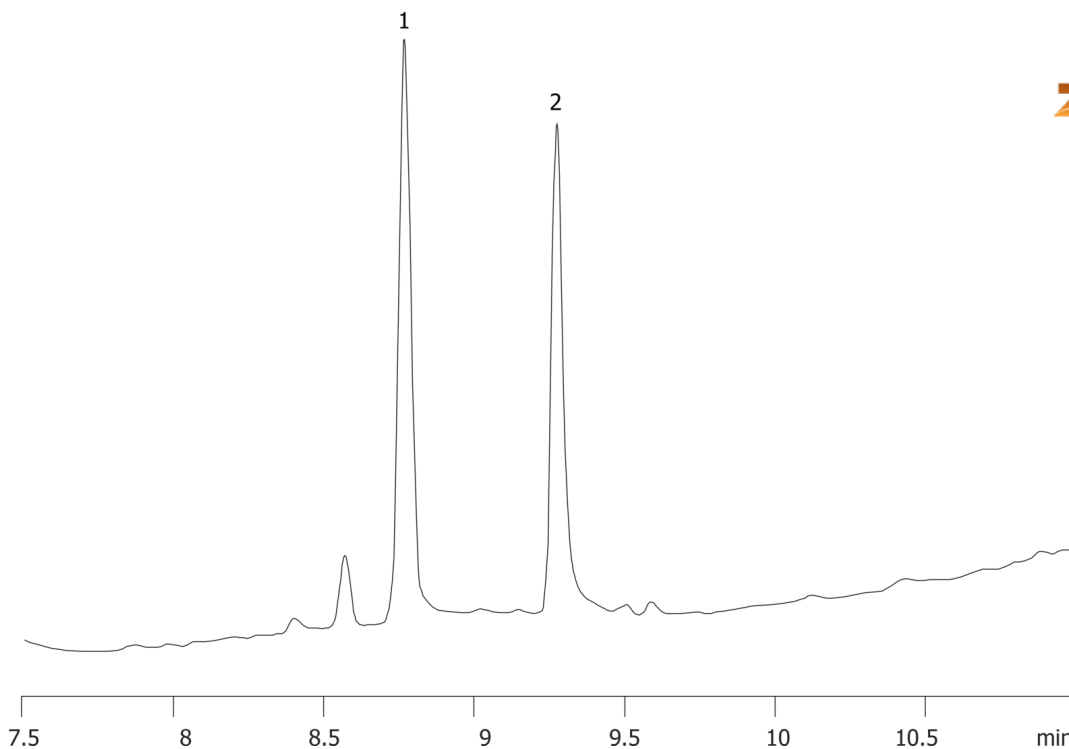
Injection: splitless :1 1 μ L @ 225°C

Detection: Flame Ionization (FID) (325°C)

14815



Products used in this application:



ANALYTES:

- 1 Propylene glycol
- 2 Ethylene glycol

