

GC Application

ID No.: 14831

Even Carbon Fatty Acid Methyl Esters (FAMES) on ZB-5

Column: Zebron[™] ZB-5, GC Cap. Column 30 m x 0.25 mm x 0.25 μ m, Ea

Phase: 5% Phenyl 95% Dimethylpolysiloxane

Dimensions: 30 meters x 0.25 mm x 0.25 μ m

Order No: 7HG-G002-11

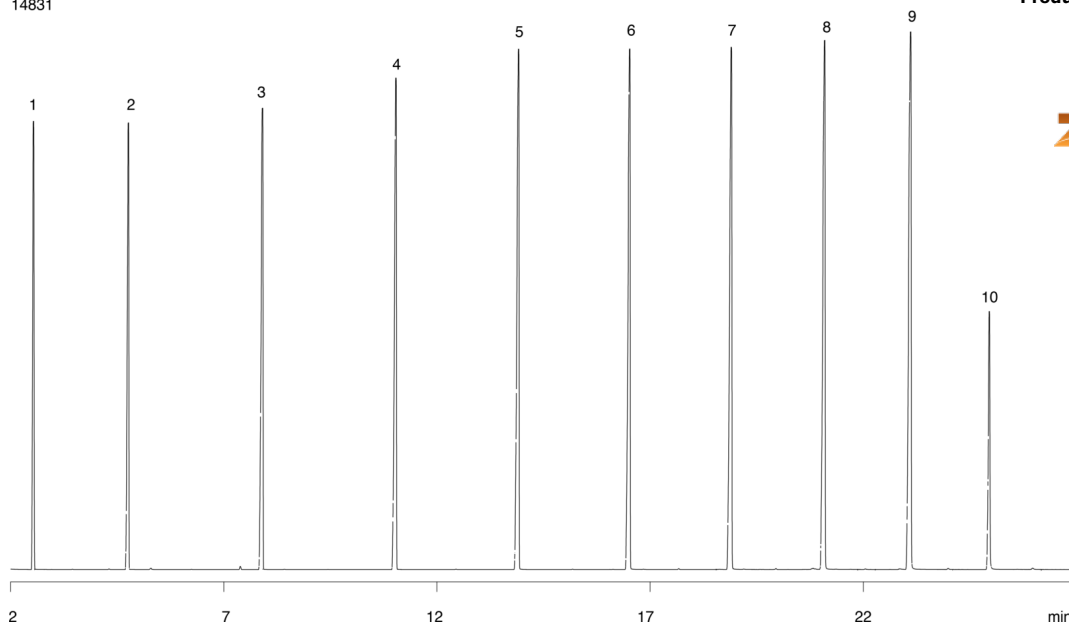
Oven Profile: 100°C for 2 min to 280 at 8°C/min for 5min.

Carrier Gas: Constant Flow Helium, 1.1 mL/min

Injection: split 20:1 0.2 μ L @ 280°C

Detection: Mass Selective (MSD) (240°C)

14831



Products used in this application:



Even Carbon Fatty Acid Methyl Esters (FAMES) on ZB-5

ANALYTES:

- 1 Methyl caproate
- 2 Methyl caprylate
- 3 Methyl caprate
- 4 Methyl laurate
- 5 Methyl myristate
- 6 Methyl palmitate
- 7 Methyl stearate
- 8 Methyl arachidate
- 9 Methyl behenate
- 10 Methyl lignocerate

