

# GC Application

ID No.: 14863

## Unsaturated FAMES on ZB-1 60x0.25x1.0

**Column:** Zebtron™ ZB-1, GC Cap. Column 60 m x 0.25 mm x 1.00 μm, Ea

**Phase:** 100% Dimethylpolysiloxane

**Dimensions:** 60 meters x 0.25 mm x 1 μm

**Order No:** 7KG-G001-22

**Oven Profile:** 165°C to 300°C at 3°C/min for 10 min.

**Carrier Gas:** Constant Flow Helium, 0.9 mL/min

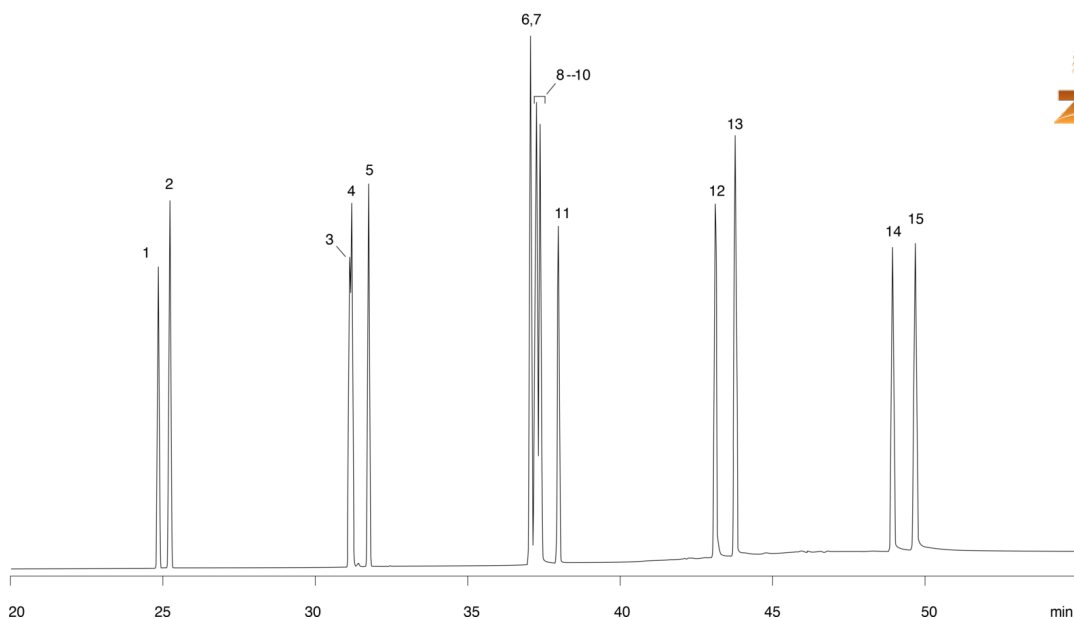
**Injection:** split 50:1 0.2 μL @ 220°C

**Detection:** Mass Selective (MSD) (240°C)

14863



Products used in this application:



## Unsaturated FAMES on ZB-1 60x0.25x1.0

### ANALYTES:

- 1 Methyl myristoleate
- 2 Methyl myristate
- 3 Methyl palmitoleate
- 4 Methyl palmitelaidate
- 5 Methyl palmitate
- 6 Methyl linoleate
- 7 Methyl linelaidate
- 8 Methyl linolenate
- 9 Methyl oleate
- 10 Methyl elaidate
- 11 Methyl stearate
- 12 Methyl gondonate
- 13 Methyl arachidate
- 14 Methyl erucate
- 15 Methyl behenate

