

GC Application

ID No.: 14882

Low Molecular Weight Amines ZB-WAX 30x0.53x1.0

Column: Zebtron™ ZB-WAX, GC Cap. Column 30 m x 0.53 mm x 1.00 µm, Ea

Phase: Polyethylene Glycol (PEG)

Dimensions: 30 meters x 0.53 mm x 1 µm

Order No: 7HK-G007-22

Oven Profile: 50°C isothermal

Carrier Gas: Constant Flow Helium, 6.7 mL/min

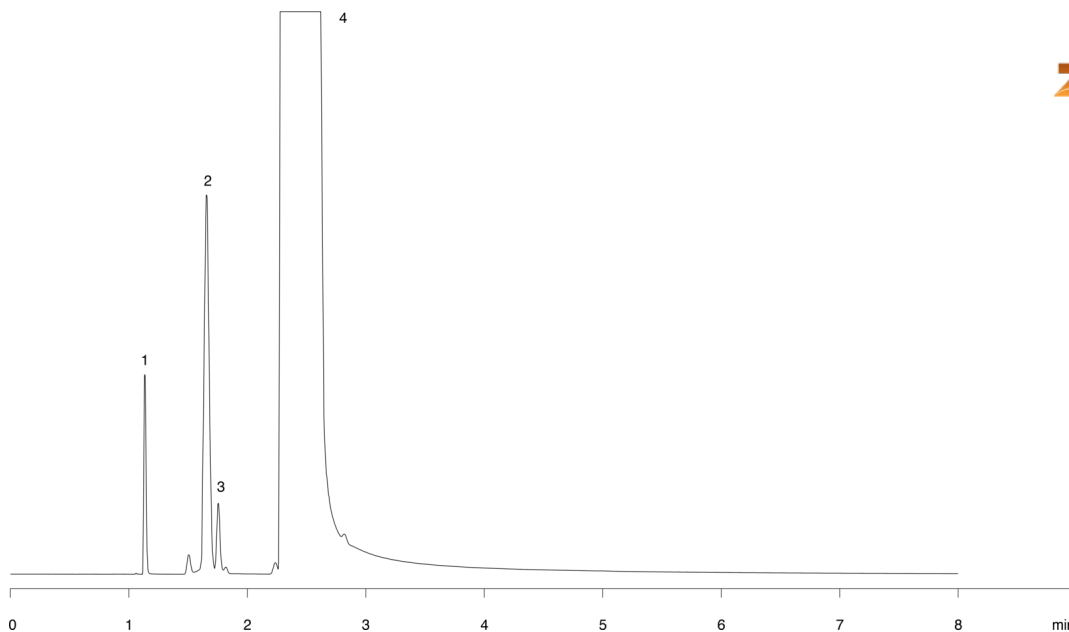
Injection: split 25:1 1 µL @ 200°C

Detection: Flame Ionization (FID) (200°C)

14882



Products used in this application:



ANALYTES:

- 1 Trimethylamine
- 2 Triethylamine
- 3 Acetone
- 4 Methanol

