

GC Application

ID No.: 14898

Phenols and Benzidine: EPA MethodS 604-605 ZB5 30x0.25x0.25

Column: Zebtron™ ZB-5, GC Cap. Column 30 m x 0.25 mm x 0.25 μm, Ea

Phase: 5% Phenyl 95% Dimethylpolysiloxane

Dimensions: 30 meters x 0.25 mm x 0.25 μm

Order No: 7HG-G002-11

Oven Profile: 50°C to 350°C at 15°C/min for 5 min.

Carrier Gas: Constant Flow Helium, 1 mL/min

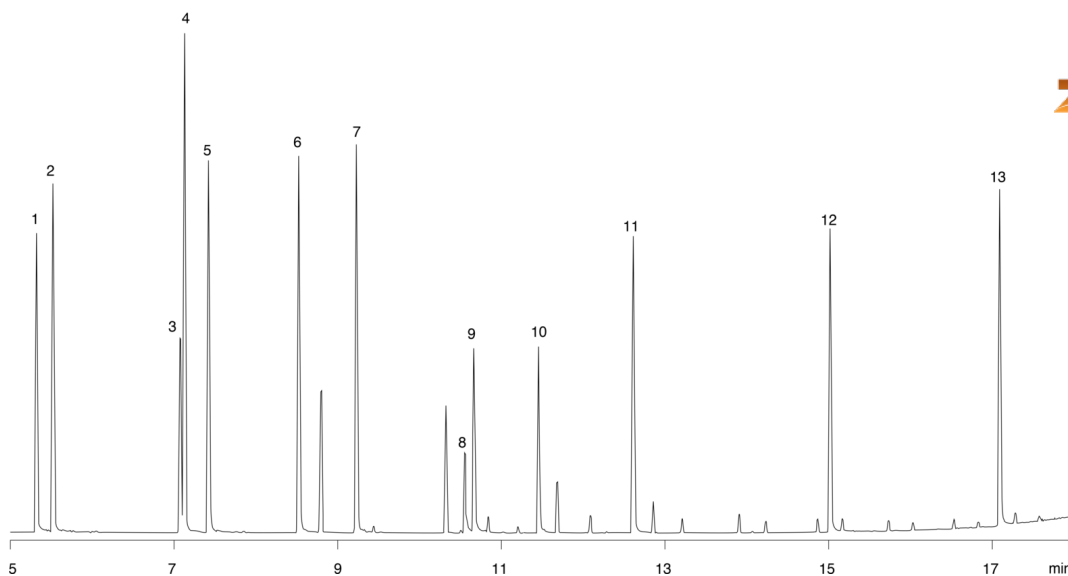
Injection: Split 20:1 1 μL @ 280°C

Detection: Mass Selective (MSD) (240°C)

14898



Products used in this application:



Phenols and Benzidine: EPA MethodS 604-605 ZB5 30x0.25x0.25

ANALYTES:

- 1 Phenol
- 2 2-Chlorophenol
- 3 2-Nitrophenol
- 4 2,4-Dimethylphenol
- 5 2,4-Dichlorophenol
- 6 4-Chloro-3-methylphenol
- 7 2,4,6-Trichlorophenol
- 8 2,4-Dinitrophenol
- 9 4-Nitrophenol
- 10 2-Methyl-4,6-dinitrophenol
- 11 Pentachlorophenol
- 12 Benzidine
- 13 3,3'-Dichlorobenzidine

