

HPLC Application

ID No.: 14908

IgG_Dog (Native) Jupiter 300 C4

Column: Jupiter[®] 5 μ m C4 300 Å, LC Column 150 x 2 mm, Ea

Dimensions: 150 x 2 mm ID

Order No: 00F-4167-B0

Elution Type: Gradient

Eluent A: 0.1%TFA/95% Water/ 5% Acetonitrile

Eluent B: 0.085% TFA/75% Acetonitrile/ 20% IPA/5% Water

Gradient Profile:	Step No.	Time (min)	Pct A	Pct B
	1	0	80	20
	2	20	10	90

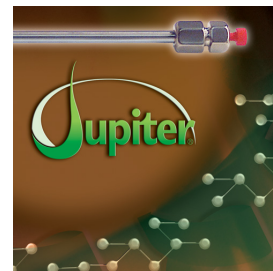
Flow Rate: 0.25 mL/min

Col. Temp.: ambient

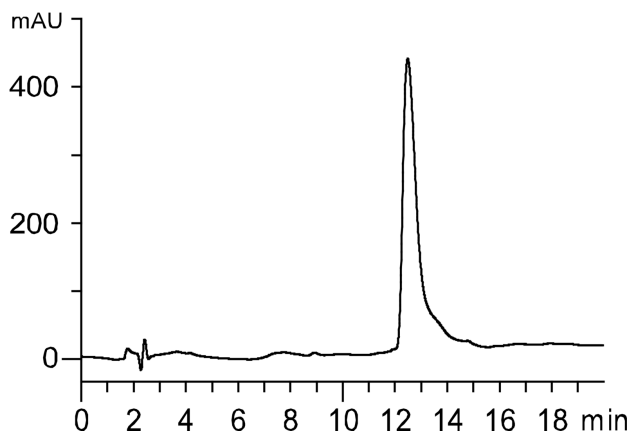
Detection: UV-Vis Abs.-Diode Array (PDA) @ nm (ambient)

Analyst Note: These applications demonstrate the utility of using low amounts of isopropanol in the organic mobile phase to improve peak shape of hydrophobic proteins. App ID#14918 shows the elution of IgG on a Jupiter 300 C4 column where Acetonitrile is used as the organic mobile phase. App ID#14908 shows the elution of IgG on a Jupiter 300 C4 column where Acetonitrile and Isopropanol are used as the organic mobile phase.

AppID 14908



Products used in this application:



ANALYTES:

1 IgG

