

# HPLC Application

ID No.: 14914

## Hu\_Insulin Degrad T1

**Column:** Jupiter® 4 µm Proteo 90 Å, LC Column 250 x 4.6 mm, Ea

**Dimensions:** 250 x 4.6 mm ID

**Order No:** 00G-4396-E0

**Elution Type:** Gradient

**Eluent A:** 0.1% TFA in Water

**Eluent B:** 0.085% TFA in 95:5 ACN/Water

<b>Gradient Profile:</b>	<b>Step No.</b>	<b>Time (min)</b>	<b>Pct A</b>	<b>Pct B</b>
	<b>1</b>	0	80	20
	<b>2</b>	15	20	80

**Flow Rate:** 1 mL/min

**Col. Temp.:** ambient

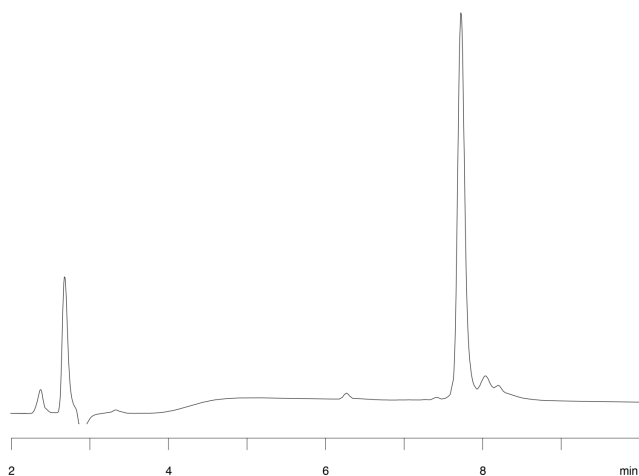
**Detection:** UV-Vis Abs.-Diode Array (PDA) @ 220 nm (ambient)

**Analyst Note:** SecurityGuard™ Guard Cartridge System extends column lifetime.

- SecurityGuard Cartridges, C12 4 x 3.0mm, 10/Pk Part No.: AJ0-6074

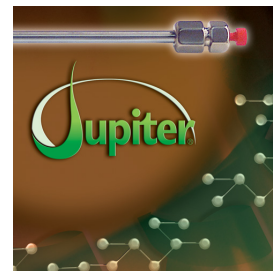
- Holder Part No.: KJ0-4282

14914



### ANALYTES:

- 1 Human Insulin T1



Products used in this application:

