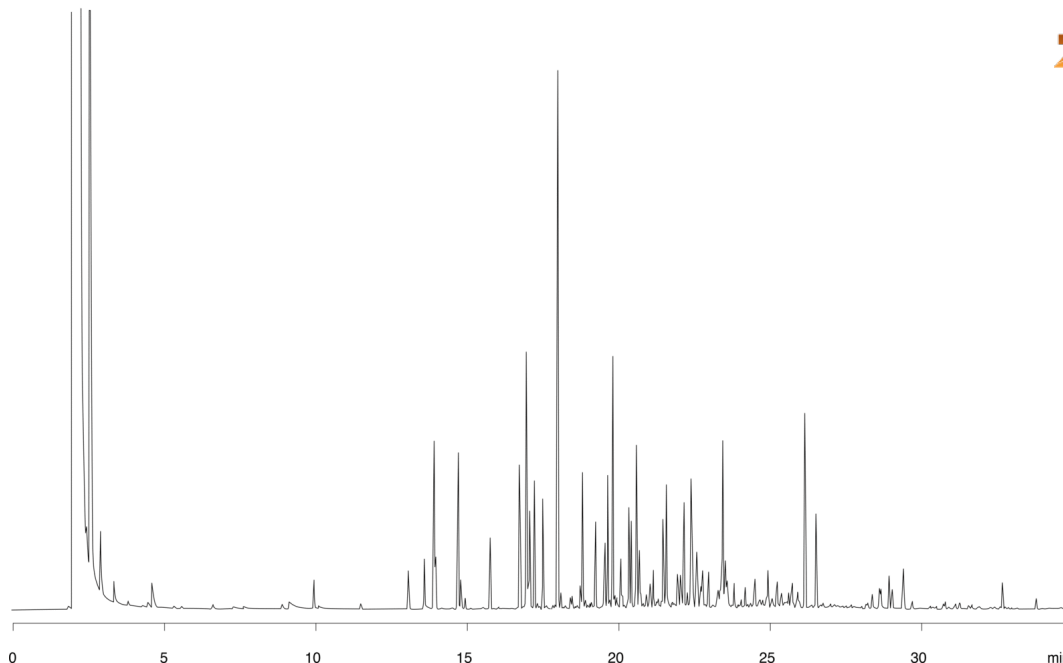


Weathered Gasoline on ZB-5MS**Column:** Zebtron[™] ZB-5MS, GC Cap. Column 30 m x 0.25 mm x 0.50 μ m, Ea**Phase:** 5% Phenyl-Arylene 95% Dimethylpolysiloxane**Dimensions:** 30 meters x 0.25 mm x 0.5 μ m**Order No:** 7HG-G010-17**Oven Profile:** 35°C for 6 min to 300°C at 6°C/min**Carrier Gas:** Constant Flow Helium, 1.2 mL/min**Injection:** Split 10:1 1 μ L @ 275°C**Detection:** Flame Ionization (FID) (300°C)

15433

**Products used in this application:****ANALYTES:****1** Gasoline