

HPLC Application

ID No.: 15504

Sulfa Drugs on Onyx C18

Column: Onyx[™] Monolithic C18, LC Column 100 x 4.6 mm, Ea

Dimensions: 100 x 4.6 mm ID

Order No: CH0-7643

Elution Type: Gradient

Eluent A: 0.1%TFA in Water

Eluent B: ACN

Gradient Profile:	Step No.	Time (min)	Pct A	Pct B
	1	0	90	10
	2	4	50	50

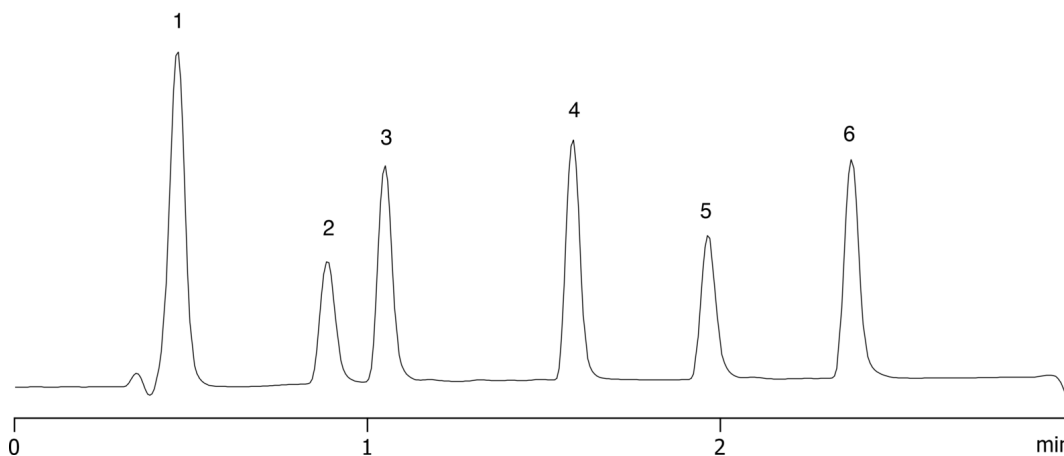
Flow Rate: 4 mL/min

Col. Temp.: ambient

Detection: UV-Vis Abs.-Diode Array (PDA) @ 254 nm (ambient)
15504



Products used in this application:



ANALYTES:

- 1 Sulfanilamide
- 2 Sulfadiazine
- 3 Sulfamerazine
- 4 Sulfamethoxazole
- 5 Sulfaquinoxaline
- 6 Sulfasalazine

