

HPLC Application

ID No.: 15587

Drug mixture extracted from Plasma using PPT

Column: Onyx[™] Monolithic C18, LC Column 100 x 4.6 mm, Ea

Dimensions: 100 x 4.6 mm ID

Order No: CH0-7643

Elution Type: Gradient

Eluent A: 0.1% Formic acid in Water

Eluent B: 0.1% Formic acid in Acetonitrile

Gradient Profile:	Step No.	Time (min)	Pct A	Pct B
	1	0	90	10
	2	4	35	65

Flow Rate: 4 mL/min

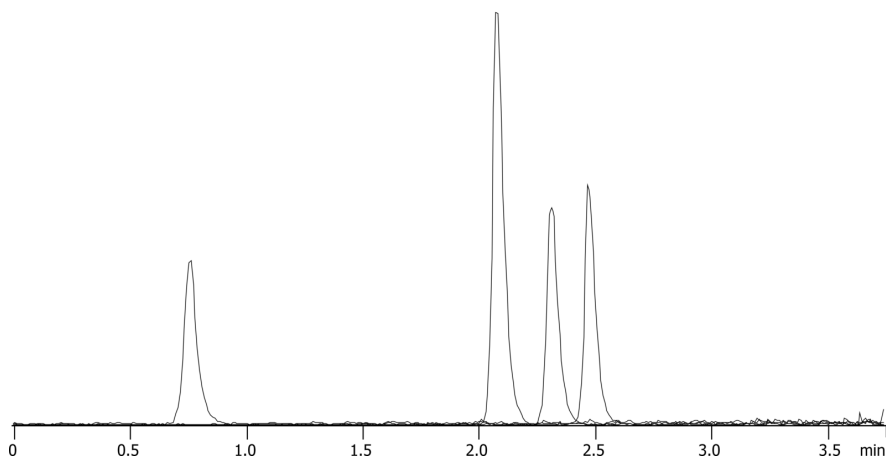
Col. Temp.: 30 °C

Detection: Mass Spectrometer (MS) @ amu (ambient)

15587



Products used in this application:



ANALYTES:

- 1** Pseudoephedrine
- 2** Propranolol
- 3** Diltiazem
- 4** Verapamil

