

# HPLC Application

ID No.: 15641

## Performance test on Onyx C8

**Column:** Onyx™ Monolithic C8, LC Column 100 x 4.6 mm, Ea

**Dimensions:** 100 x 4.6 mm ID

**Order No:** CH0-7647

**Elution Type:** Isocratic

**Eluent A:** Water

**Eluent B:** Acetonitrile

Gradient Profile:	Step No.	Time (min)	Pct A	Pct B
	1	0	40	60

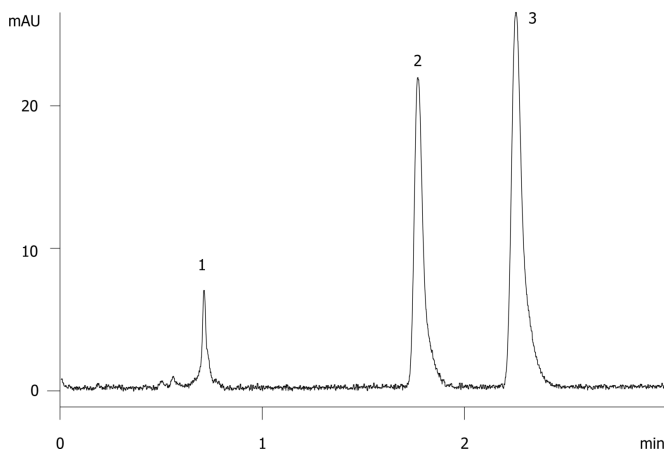
**Flow Rate:** 2 mL/min

**Col. Temp.:** ambient

**Detection:** UV-Vis Abs.-Variable Wave.(UV) @ 254 nm (ambient)  
15641



Products used in this application:



### ANALYTES:

- 1** Thiourea  
Retention Time: 0.706 min
- 2** Progesterone  
Retention Time: 1.764 min
- 3** Anthracene  
Retention Time: 2.248 min