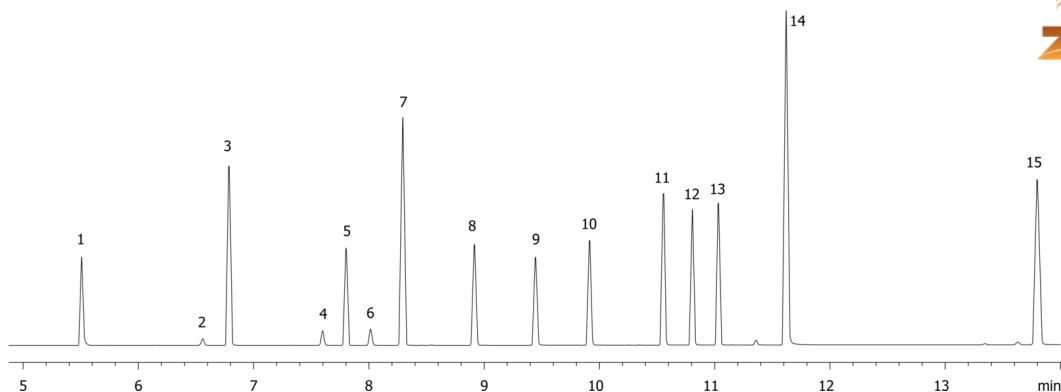


EPA Method 515.2: Chlorinated Acids on ZB-1701

Column: Zebtron™ ZB-1701, GC Cap. Column 30 m x 0.25 mm x 0.25 µm, Ea
Phase: 14% Cyanopropylphenyl 86% Dimethylpolysiloxane
Dimensions: 30 meters x 0.25 mm x 0.25 µm
Order No: 7HG-G006-11
Oven Profile: 80°C to 180°C at 25°C/min to 220°C at 8°C/min to 260°C at 20°C/min for 3 min
Carrier Gas: Constant Flow Helium, 1.2 mL/min
Injection: Splitless :1 2 µL @ 200°C
Detection: Electron Capture (ECD) (280°C)
Analyst Note: Analytes were methylated

**Products used in this application:**

15791



EPA Method 515.2: Chlorinated Acids on ZB-1701

ANALYTES:

- 1** 3,5-Dichlorobenzoic acid
- 2** 2,4-Dichlorophenylacetic acid
- 3** Dicamba
- 4** Dichloroprop
- 5** 4,4'-Dibromooctafluorobiphenyl
- 6** 2,4-D
- 7** Pentachlorophenol
- 8** Silvex
- 9** 2,4,5-T
- 10** 2,4-DB
- 11** Dinoseb
- 12** Bentazon
- 13** Dacthal
- 14** Picloram
- 15** Acifluorfen

