

# HPLC Application

ID No.: 15842

## Beta-Blockers (Polar Basics) on Gemini 3um C18

**Column:** Gemini<sup>®</sup> 3  $\mu$ m C18 110 Å, LC Column 150 x 4.6 mm, Ea

**Dimensions:** 150 x 4.6 mm ID

**Order No:** 00F-4439-E0

**Elution Type:** Isocratic

**Eluent A:** 20mM Phosphate buffer pH2.5

**Eluent B:** Acetonitrile

Gradient Profile:	Step No.	Time (min)	Pct A	Pct B
	1	0	75	25

**Flow Rate:** 1.5 mL/min

**Col. Temp.:** ambient

**Detection:** UV-Vis Abs.-Variable Wave.(UV) @ 230 nm (ambient)

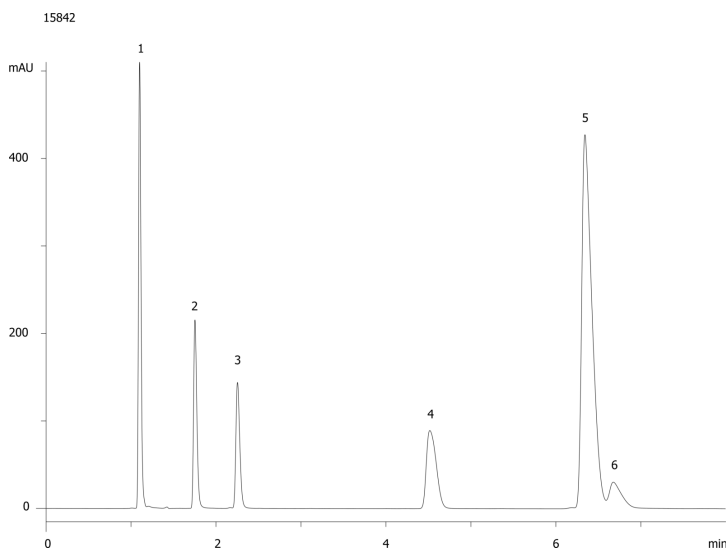
**Analyst Note:** SecurityGuard<sup>™</sup> Guard Cartridge System extends column lifetime.

- SecurityGuard Cartridges, Gemini C18 4 x 3.0mm, 10/Pk Part No.: AJ0-7597

- Holder Part No.: KJ0-4282



Products used in this application:



### ANALYTES:

- 1 Atenolol
- 2 Pindolol
- 3 Metoprolol
- 4 Labetalol
- 5 Propranolol
- 6 Alprenolol

