

HPLC Application

ID No.: 15849

Basic Drugs at High pH on Gemini 5um C18

Column: Gemini[®] 5 μ m C18 110 Å, LC Column 150 x 4.6 mm, Ea

Dimensions: 150 x 4.6 mm ID

Order No: 00F-4435-E0

Elution Type: Isocratic

Eluent A: 20mM TEA pH11.0

Eluent B: Acetonitrile

Gradient Profile:	Step No.	Time (min)	Pct A	Pct B
	1	0	50	50

Flow Rate: 1.5 mL/min

Col. Temp.: ambient

Detection: UV-Vis Abs.-Variable Wave.(UV) @ 230 nm (ambient)

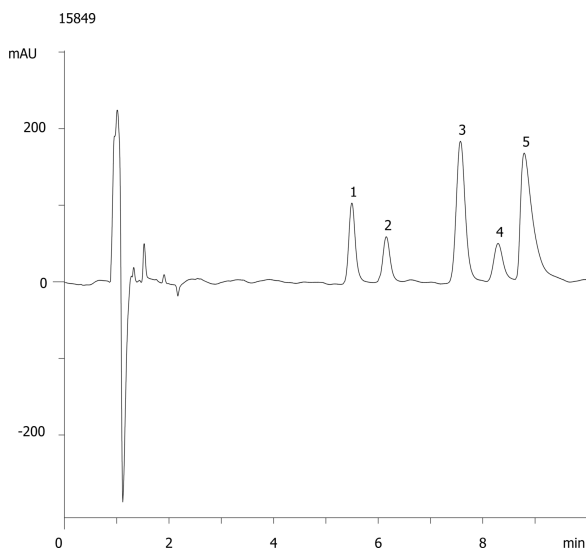
Analyst Note: SecurityGuard[™] Guard Cartridge System extends column lifetime.

- SecurityGuard Cartridges, Gemini C18 4 x 3.0mm, 10/Pk Part No.: AJ0-7597

- Holder Part No.: KJ0-4282



Products used in this application:



ANALYTES:

- 1 Lidocaine
- 2 Tetracaine
- 3 Triprolidine
- 4 Protriptyline
- 5 Diphenhydramine

