

HPLC Application

ID No.: 15860

Tricyclic Antidepressants at Neutral pH on Gemini 5um C6-Phenyl

Column: Gemini® 5 µm C6-Phenyl 110 Å, LC Column 150 x 4.6 mm, Ea

Dimensions: 150 x 4.6 mm ID

Order No: 00F-4444-E0

Elution Type: Isocratic

Eluent A: 20mM Phosphate buffer pH7.0

Eluent B: Acetonitrile

Eluent C: Methanol

| Gradient Profile: | Step No. | Time (min) | Pct A | Pct B | Pct C |
|-------------------|----------|------------|-------|-------|-------|
| | 1 | 0 | 30 | 35 | 35 |

Flow Rate: 1.5 mL/min

Col. Temp.: ambient

Detection: UV-Vis Abs.-Variable Wave.(UV) @ 254 nm (ambient)

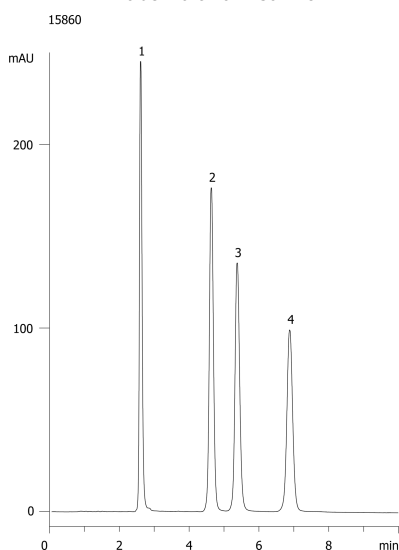
Analyst Note: SecurityGuard™ Guard Cartridge System extends column lifetime.

- SecurityGuard Cartridges, Gemini C6-Phenyl 4 x 3.0mm, 10/Pk Part No.: AJ0-7915

- Holder Part No.: KJ0-4282



Products used in this application:



ANALYTES:

- 1 Nortriptyline
- 2 Imipramine
- 3 Amitriptyline
- 4 Clomipramine

