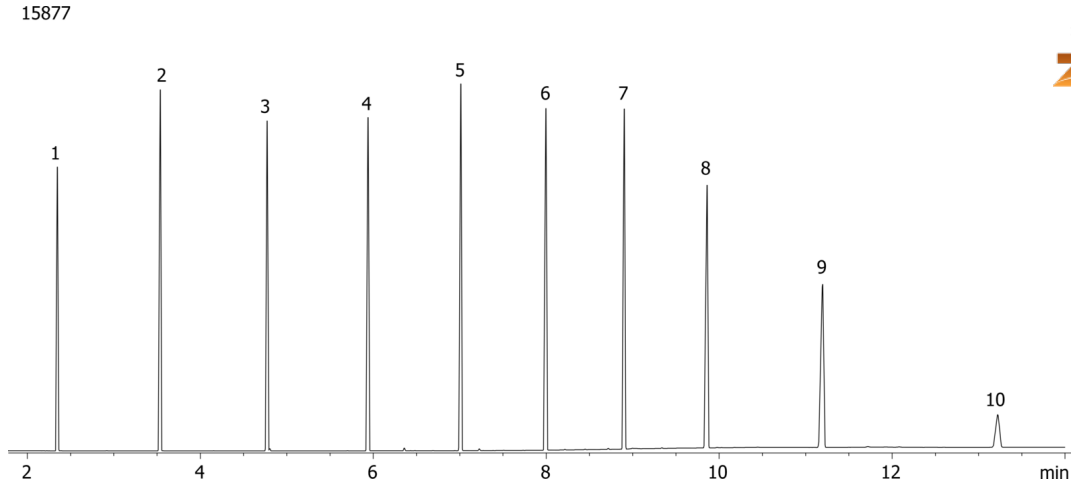


**Even FAMES on ZB-WAXplus****Column:** Zebron<sup>TM</sup> ZB-WAXplus<sup>TM</sup>, GC Cap. Column 20 m x 0.18 mm x 0.18  $\mu$ m, Ea**Phase:** Polyethylene Glycol (PEG)**Dimensions:** 20 meters x 0.18 mm x 0.18  $\mu$ m**Order No:** 7FD-G013-08**Oven Profile:** 60°C to 240°C at 20°C/min for 5 min**Carrier Gas:** Constant Flow Helium, 1 mL/min**Injection:** Split 40:1 0.2  $\mu$ L @ 240°C**Detection:** Flame Ionization (FID) (250°C)**Analyst Note:** All analytes are 1mg/mL, except C24 at 0.3mg/mL**Products used in this application:**

## Even FAMES on ZB-WAXplus

### ANALYTES:

- 1 Methyl caproate (C6)
- 2 Methyl caprylate (C8)
- 3 Methyl caprate (C10)
- 4 Methyl laurate (C12)
- 5 Methyl myristate (C14)
- 6 Methyl palmitate (C16)
- 7 Methyl stearate (C18)
- 8 Methyl arachidate (C20)
- 9 Methyl behenate (C23)
- 10 Methyl lignocerate (C24)

