

# HPLC Application

ID No.: 15885

## Antidepressants pH 10.5 using Gemini 5u C6-Phenyl

**Column:** Gemini® 5 µm C6-Phenyl 110 Å, LC Column 150 x 4.6 mm, Ea

**Dimensions:** 150 x 4.6 mm ID

**Order No:** 00F-4444-E0

**Elution Type:** Isocratic

**Eluent A:** 10mM Ammonium Bicarbonate pH 10.5

**Eluent B:** Acetonitrile

**Eluent C:** Methanol

Gradient Profile:	Step No.	Time (min)	Pct A	Pct B	Pct C
	1	0	30	35	35

**Flow Rate:** 1 mL/min

**Col. Temp.:** ambient

**Detection:** UV-Vis Abs.-Variable Wave.(UV) @ 254 nm (ambient)

**Analyst Note:** SecurityGuard™ Guard Cartridge System extends column lifetime.

- SecurityGuard Cartridges, Gemini C6-Phenyl 4 x 3.0mm, 10/Pk Part No.: AJ0-7915

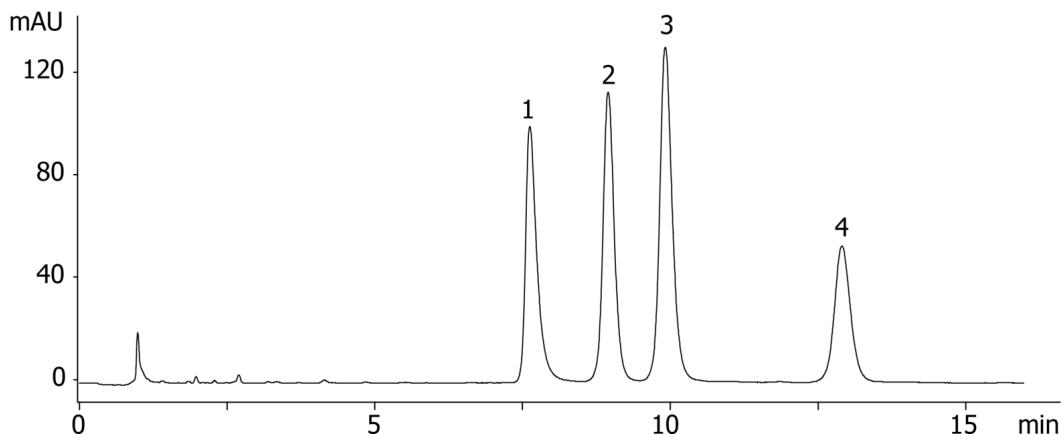
- Holder Part No.: KJ0-4282



Products used in this application:



15885



### ANALYTES:

- 1 Imipramine
- 2 Nortriptyline
- 3 Amitriptyline
- 4 Clomipramine

