

Common Solvents on ZB-WAXplus

Column: Zebtron™ ZB-WAXplus™, GC Cap. Column 30 m x 0.25 mm x 0.25 μm, Ea

Phase: Polyethylene Glycol (PEG)

Dimensions: 30 meters x 0.25 mm x 0.25 μm

Order No: 7HG-G013-11

Oven Profile: 50°C for 4 min to 140°C at 20°C/min

Carrier Gas: Constant Flow Helium, 1.4 mL/min

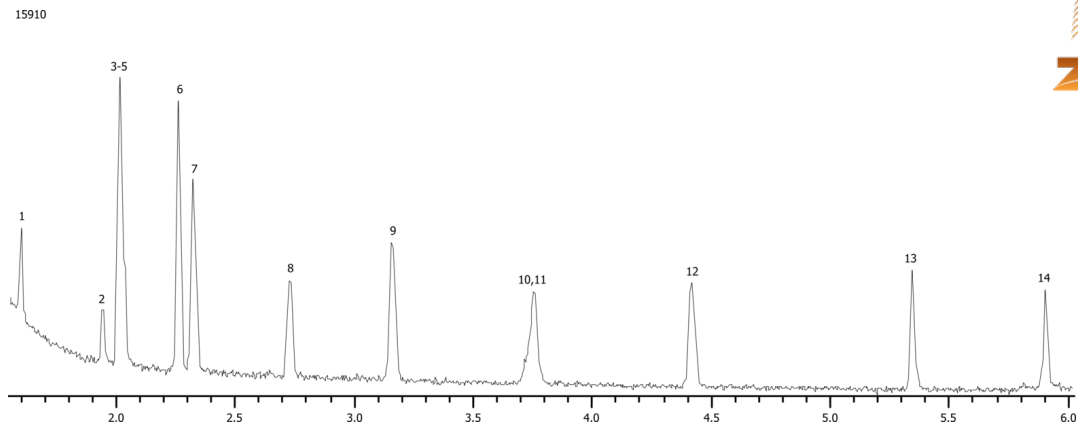
Injection: Split 25:1 4 μL @ 100°C

Detection: Mass Selective (MSD) (250°C)

Analyst Note: 4 μL Headspace split 25:1 at 100°C



Products used in this application:



Common Solvents on ZB-WAXplus

ANALYTES:

- 1 Acetone
- 2 Ethyl acetate
- 3 Isopropyl acetate
- 4 Methanol
- 5 Methyl ethyl ketone
- 6 Isopropyl alcohol
- 7 Ethanol
- 8 n-Propyl acetate
- 9 Methyl isobutyl ketone
- 10 n-Propanol
- 11 Toluene
- 12 n-Butyl acetate
- 13 Methoxypropanol (Propylene glycol monomethyl ether)
- 14 3-Ethoxy propanol (Propylene glycol \ddot{A} -monoethyl ether)

