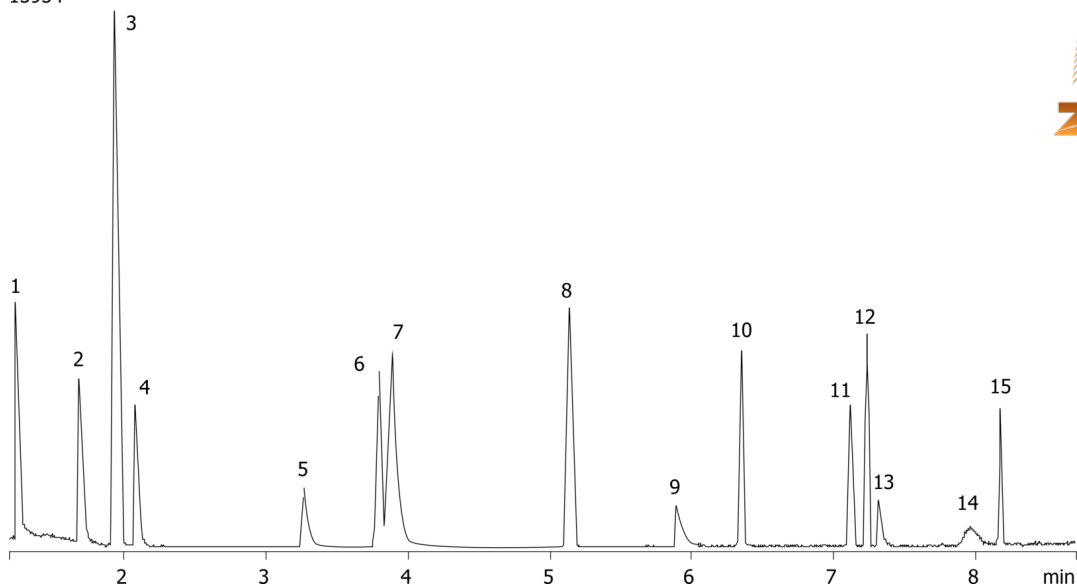


**Common Solvents on ZB-624****Column:** Zebron<sup>™</sup> ZB-624, GC Cap. Column 20 m x 0.18 mm x 1.00  $\mu$ m, Ea**Phase:** 6% Cyanopropylphenyl 94% Dimethylpolysiloxane**Dimensions:** 20 meters x 0.18 mm x 1  $\mu$ m**Order No:** 7FD-G005-22**Oven Profile:** 40°C for 4 min to 150°C at 15°C/min**Carrier Gas:** Constant Flow Helium, 1 mL/min**Injection:** Split 25:1 4  $\mu$ L @ 100°C**Detection:** Mass Selective (MSD) (250°C)

15954

**Products used in this application:**

## Common Solvents on ZB-624

### ANALYTES:

- 1 Methanol
- 2 Ethanol
- 3 Acetone
- 4 Isopropyl alcohol
- 5 n-Propanol
- 6 Methyl ethyl ketone
- 7 Ethyl acetate
- 8 Isopropyl acetate
- 9 Methoxypropanol (Propylene glycol monomethyl ether)
- 10 n-Propyl acetate
- 11 Methyl isobutyl ketone
- 12 Toluene
- 13 3-Ethoxy propanol (Propylene glycol  $\alpha$ -monoethyl ether)
- 14 2,4-Pentanedione
- 15 n-Butyl acetate

