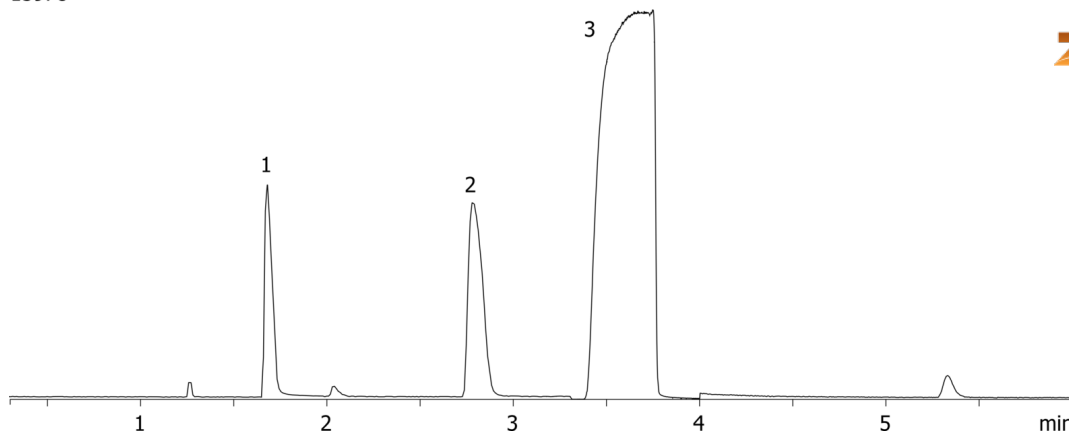


**Isopropanol Purity on ZB-624 30x0.32x1.80****Column:** Zebron<sup>™</sup> ZB-624, GC Cap. Column 30 m x 0.32 mm x 1.80  $\mu$ m, Ea**Phase:** 6% Cyanopropylphenyl 94% Dimethylpolysiloxane**Dimensions:** 30 meters x 0.32 mm x 1.8  $\mu$ m**Order No:** 7HM-G005-31**Oven Profile:** 40°C for 4 min to 60°C at 5°C/min to 150 °C at 25°C/min for 2 min**Carrier Gas:** Constant Flow Helium, 1.5 mL/min**Injection:** Split 40:1 1  $\mu$ L @ 150°C**Detection:** Mass Selective (MSD) (0°C)**Analyst Note:** Ethanol at 0.5% concentration was used as the internal standard. RSD values for water were calculated at 4.3%

15978

**Products used in this application:****ANALYTES:**

- 1 Water
- 2 Ethanol
- 3 Isopropanol

