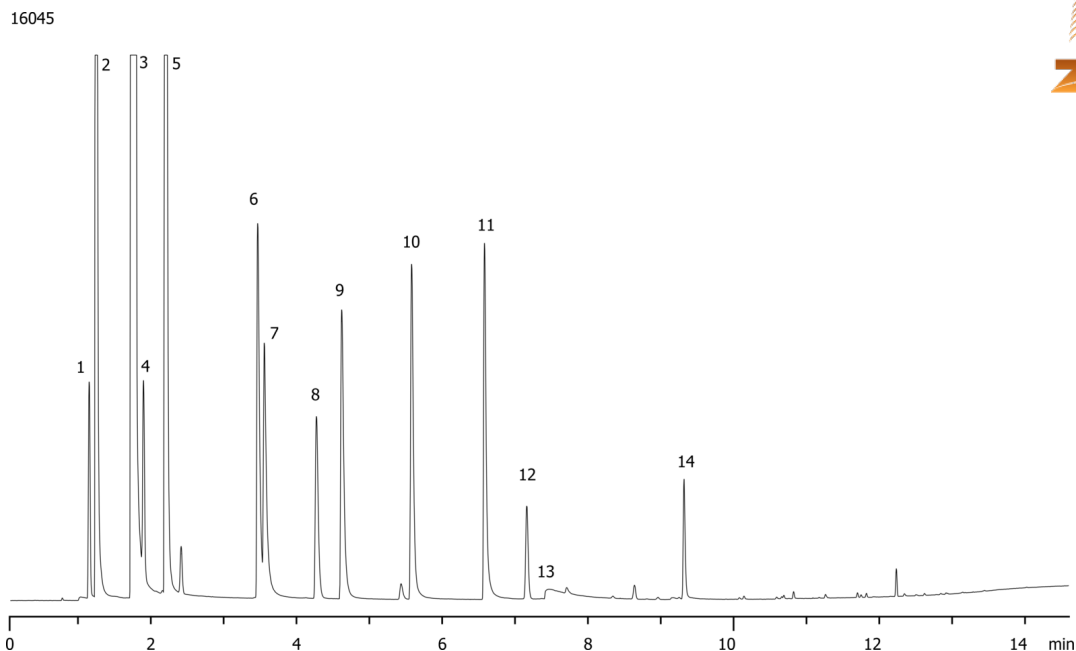


**Scotch Whiskey Main Compounds on ZB-624**

**Column:** Zebron<sup>™</sup> ZB-624, GC Cap. Column 20 m x 0.18 mm x 1.00  $\mu$ m, Ea  
**Phase:** 6% Cyanopropylphenyl 94% Dimethylpolysiloxane  
**Dimensions:** 20 meters x 0.18 mm x 1  $\mu$ m  
**Order No:** 7FD-G005-22  
**Oven Profile:** 35°C for 4 min to 85°C at 10°C/min to 200°C at 25°C/min for 1 min

**Carrier Gas:** Constant Flow Helium, 1.5 mL/min  
**Injection:** Split 40:1 0.2  $\mu$ L @ 140°C  
**Detection:** Flame Ionization (FID) (200°C)  
**Analyst Note:** Analytes are 20ppm in 60/40 water/ethanol matrix

**Products used in this application:**

## Scotch Whiskey Main Compounds on ZB-624

### ANALYTES:

- 1 Acetaldehyde
- 2 Methanol
- 3 Ethanol
- 4 Acrolein
- 5 Isopropanol
- 6 Allyl alcohol
- 7 1-Propanol
- 8 Ethyl acetate
- 9 sec-Butanol
- 10 Isobutanol
- 11 n-Butanol
- 12 Acetal
- 13 Acetic acid
- 14 Acetaldehyde Trimer

