

## Glenfiddich® Scotch Whiskey on ZB-WAXplus

**Column:** Zebron™ ZB-WAXplus™, GC Cap. Column 30 m x 0.25 mm x 0.25 μm, Ea

**Phase:** Polyethylene Glycol (PEG)

**Dimensions:** 30 meters x 0.25 mm x 0.25 μm

**Order No:** 7HG-G013-11

**Oven Profile:** 35°C for 5 min to 200°C at 30°C/min for 1min

**Carrier Gas:** Constant Flow Helium, 1.4 mL/min

**Injection:** Split 30:1 0.2 μL @ 140°C

**Detection:** Flame Ionization (FID) (280°C)

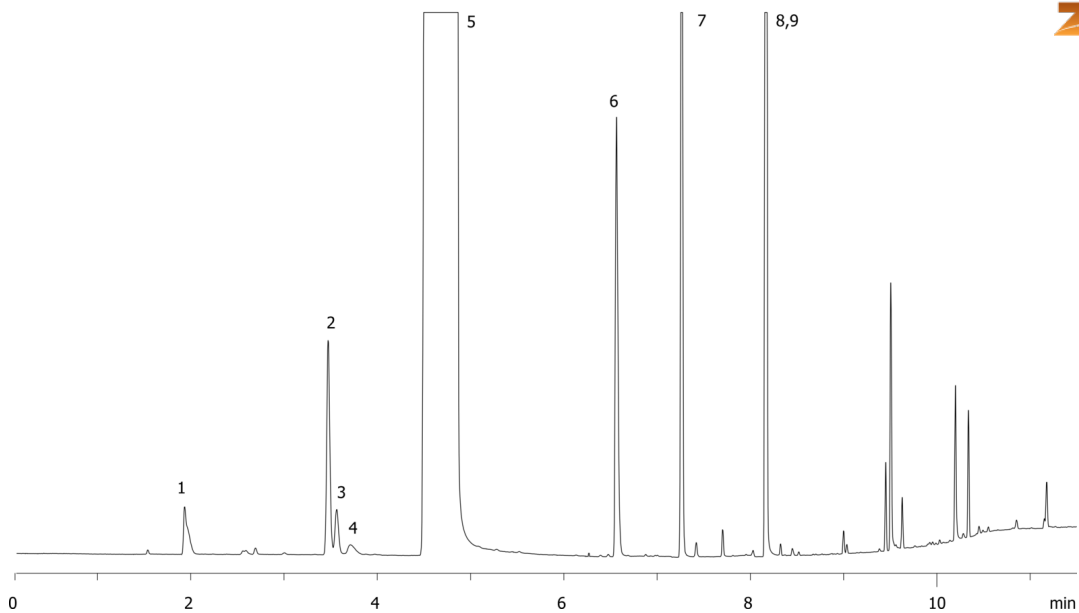
**Analyst Note:** Injection of pure Glenfiddich®



Products used in this application:



16046



### ANALYTES:

- 1 Acetaldehyde
- 2 Ethyl acetate
- 3 Acetal
- 4 Methanol
- 5 Ethanol
- 6 1-Propanol
- 7 Isobutanol
- 8 Isoamyl alcohol
- 9 2-Methylbutanol

