

Poly Brominated Diphenyl Ethers (PBDEs) on ZB-5HT 30x0.25x0.10

Column: Zebtron™ ZB-5HT, GC Cap. Column 30 m x 0.25 mm x 0.10 µm, Ea

Phase: 5% Phenyl 95% Dimethylpolysiloxane

Dimensions: 30 meters x 0.25 mm x 0.1 µm

Order No: 7HG-G015-02

Oven Profile: 125°C to 380°C at 22°C/min for 15min

Carrier Gas: Constant Flow Helium, 1.3 mL/min

Injection: Pulsed :1 2 µL @ 350°C

Detection: Mass Selective (MSD) (0°C)

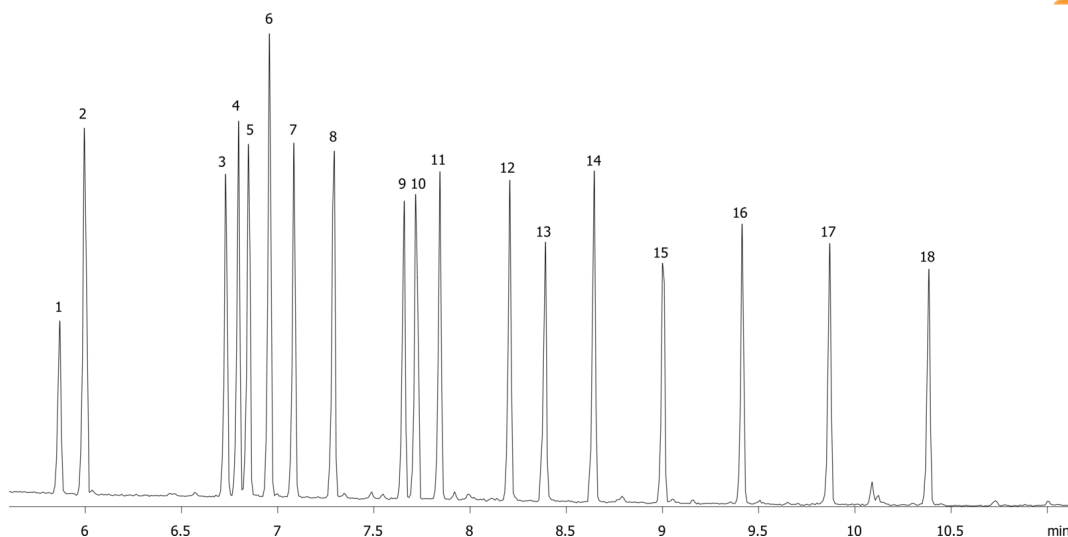
Analyst Note: Analytes were 2.5ppm in isoctane
Pulsed splitless injection at 50psi using direct connect liner.



Products used in this application:



16055



Poly Brominated Diphenyl Ethers (PBDEs) on ZB-5HT 30x0.25x0.10

ANALYTES:

- 1 BDE-25
- 2 BDE-28
- 3 BDE-75
- 4 BDE-49
- 5 BDE-71
- 6 BDE-47
- 7 BDE-66
- 8 BDE-77
- 9 BDE-100
- 10 BDE-119
- 11 BDE-99
- 12 BDE-85
- 13 BDE-154
- 14 BDE-153
- 15 BDE-138
- 16 BDE-183
- 17 BDE-190
- 18 BDE-203

