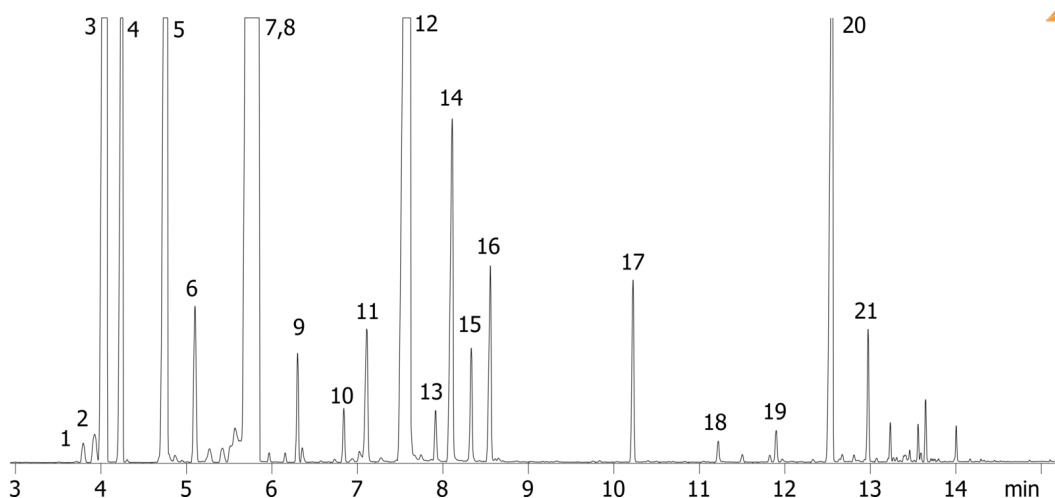


**Rosemary Oil on ZB-1MS****Column:** Zebron<sup>™</sup> ZB-1MS, GC Cap. Column 10 m x 0.10 mm x 0.10 µm, Ea**Phase:** 100% Dimethylpolysiloxane**Dimensions:** 10 meters x 0.1 mm x 0.1 µm**Order No:** 7CB-G011-02**Oven Profile:** 45°C for 2min to 130°C at 8°C/min to 200°C at 30°C/min for 2min**Carrier Gas:** Constant Flow Helium, 0.4 mL/min**Injection:** Split 120:1 0.2 µL @ 160°C**Detection:** Mass Selective (MSD) (300°C)**Analyst Note:** Sample was 10% in dichloromethane**Products used in this application:**

16070



## Rosemary Oil on ZB-1MS

### ANALYTES:

- 1 Tricyclene
- 2  $\alpha$ -Thujene
- 3  $\alpha$ -Pinene
- 4 Camphene
- 5 beta-Pinene
- 6 beta-Myrcene
- 7 Eucalyptol
- 8 Limonene
- 9  $\gamma$ -Terpinene
- 10 Terpinolene
- 11 Linalool
- 12 Camphor
- 13 Isoborneol
- 14 Borneol
- 15 4-Terpineol
- 16 Terpineol
- 17 Bornyl acetate
- 18 Eugenol
- 19 Copaene
- 20 Caryophyllene
- 21  $\alpha$ -Caryophyllene

