

HPLC Application

ID No.: 16109

Fluoxetine at pH 2.5 using Onyx C18 3.0mm ID

Column: Onyx[™] Monolithic C18, LC Column 100 x 3 mm, Ea

Dimensions: 100 x 3 mm ID

Order No: CH0-8158

Elution Type: Gradient

Eluent A: 20mM Potassium phosphate pH 2.5 in water

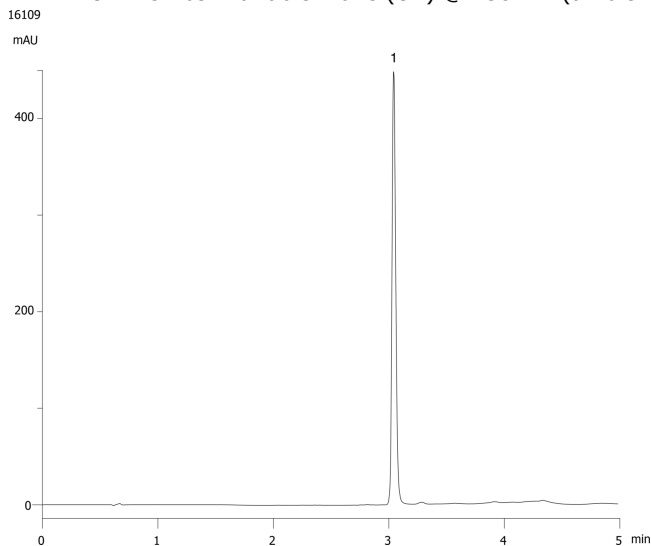
Eluent B: 20mM Potassium phosphate pH 2.5 in Acetonitrile

| Gradient Profile: | Step No. | Time (min) | Pct A | Pct B |
|--------------------------|-----------------|-------------------|--------------|--------------|
| | 1 | 0 | 90 | 10 |
| | 3 | 3 | 20 | 80 |

Flow Rate: 1 mL/min

Col. Temp.: ambient

Detection: UV-Vis Abs.-Variable Wave.(UV) @ 230 nm (ambient)



ANALYTES:

1 Fluoxetine



Products used in this application:

