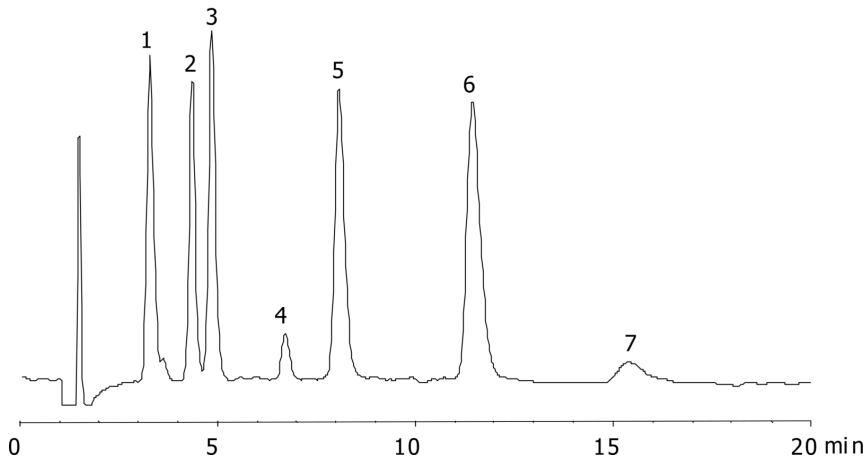


Transition Metals

Column: N/A
Dimensions: N/A
Order No: N/A
Elution Type: N/A
Eluent A: 6mM Tartaric acid + 4mM Oxalic Acid aq.
Gradient

Step No.	Time (min)	Pct A
1	0	100

Profile:
Flow Rate: 1 mL/min
Col. Temp.: 40 °C
Detection: Conductivity @ (ambient)
16114



ANALYTES:

- 1 Ni+
- 2 Zn²⁺
- 3 Co²⁺
- 4 Fe²⁺
- 5 Mn²⁺
- 6 Cd²⁺
- 7 Pb²⁺

