

DDD, DDT, And DDE Isomers on ZB-MR1

Column: Zebtron[™] ZB-MultiResidue[™]-1, GC Cap. Column 30 m x 0.25 mm x 0.25 μ m, Ea

Phase:

Dimensions: 30 meters x 0.25 mm x 0.25 μ m

Order No: 7HG-G016-11

Oven Profile: 100 °C for 0.5 min to 200 °C at 25 °C/min to 320 °C at 15°C/min for 2 min

Carrier Gas: Constant Pressure Helium, 0.8 mL/min

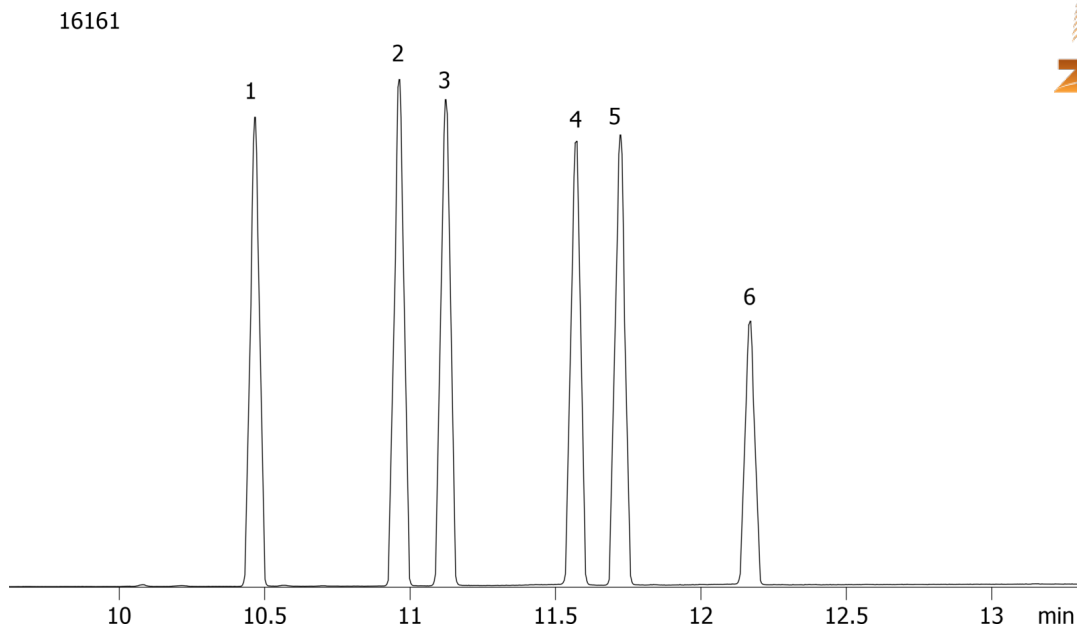
Injection: Splitless :1 1 μ L @ 260°C

Detection: Mass Selective (MSD) (320°C)

Analyst Note: Analytes are 25 ng on column



Products used in this application:



ANALYTES:

- 1 o,p'-DDE
- 2 p,p'-DDE
- 3 o,p'-DDD
- 4 o,p'-DDT
- 5 p,p'-DDD
- 6 p,p'-DDT

