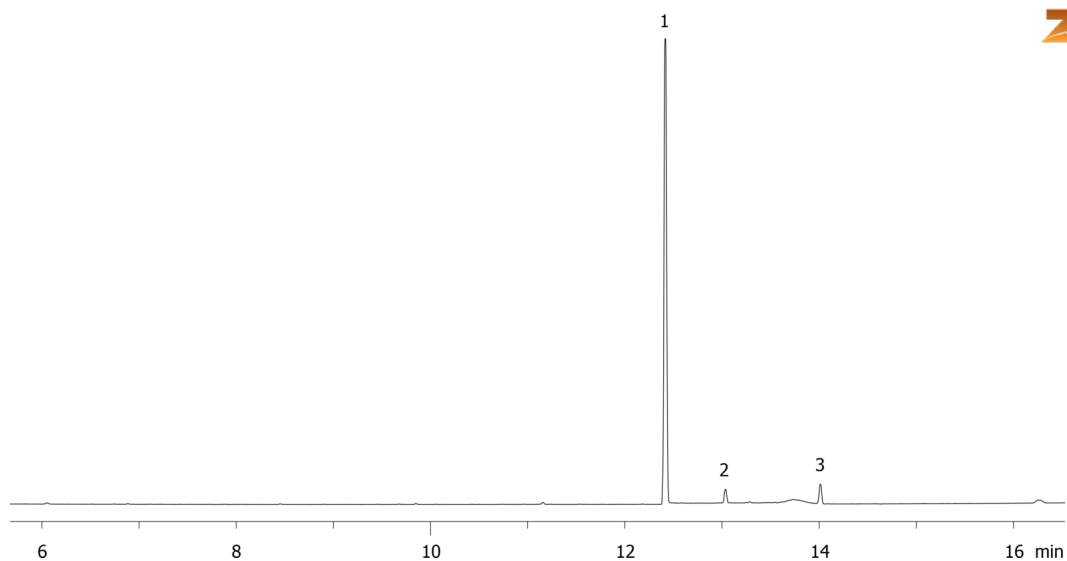


**Low Breakdown of Endrin on ZB-MR2****Column:** Zebron<sup>™</sup> ZB-MultiResidue<sup>™</sup>-2, GC Cap. Column 30 m x 0.32 mm x 0.25 µm, Ea**Phase:****Dimensions:** 30 meters x 0.32 mm x 0.25 µm**Order No:** 7HM-G017-11**Oven Profile:** 100 °C for 0.5 min to 340 °C at 15 °C/min for 2 min**Carrier Gas:** Constant Flow Helium, 1.6 mL/min**Injection:** Splitless :1 1 µL @ 250°C**Detection:** Electron Capture (ECD) (350°C)**Analyst Note:** Analyte was 250 pg on column.

16164

**Products used in this application:****ANALYTES:**

- 1 Endrin
- 2 Endrin aldehyde
- 3 Endrin ketone

