

GC Application

ID No.: 16186

EPA Method 8151: Chlorinated Herbicides on ZB-MR2

Column: Zebtron[™] ZB-MultiResidue[™]-2, GC Cap. Column 30 m x 0.32 mm x 0.25 µm, Ea

Phase: Proprietary Pesticides Phase

Dimensions: 30 meters x 0.32 mm x 0.25 µm

Order No: 7HM-G017-11

Oven Profile: 50 °C for 1 min to 180 °C at 35 °C/min for 2 min to 205 °C at 5 °C/min to 320 °C at 20 °C/min.

Carrier Gas: Constant Flow Helium, 2.5 mL/min

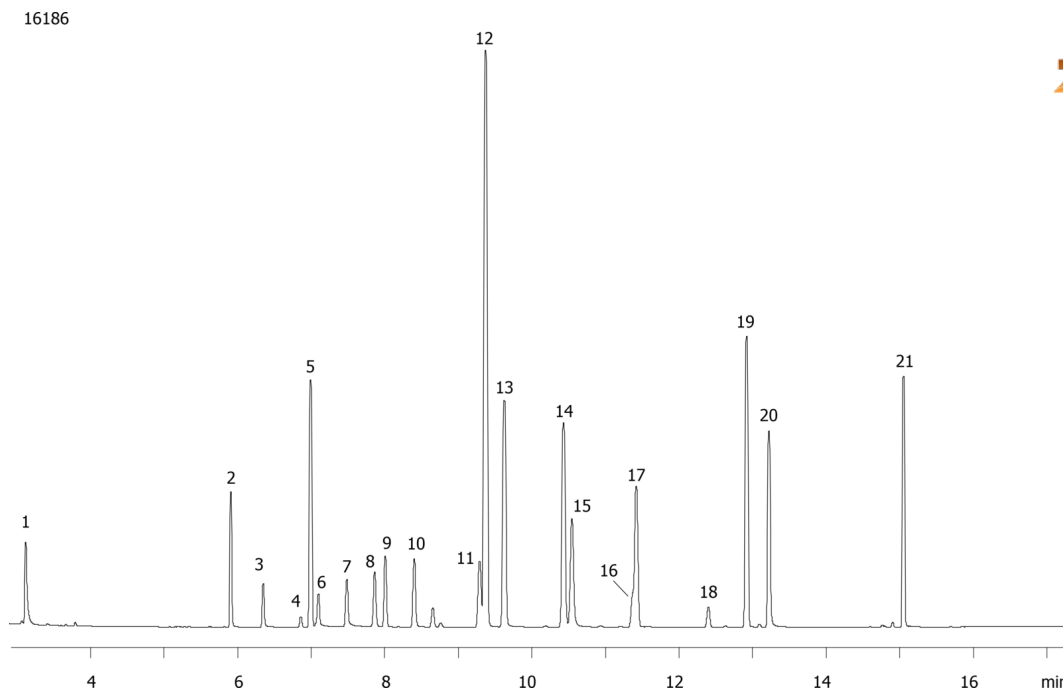
Injection: Splitless :1 1 µL @ 250°C

Detection: Electron Capture (ECD) (350°C)

Analyst Note: Analytes are 500 ppb in Dichloromethane



Products used in this application:



EPA Method 8151: Chlorinated Herbicides on ZB-MR2

ANALYTES:

- 1 Dalapon
- 2 3,5-Dichlorobenzoic acid
- 3 4-Nitrophenol
- 4 DCAA
- 5 Dicamba
- 6 MCPP
- 7 MCPA
- 8 Dichloroprop
- 9 DBOB
- 10 2,4-D
- 11 contaminant
- 12 Pentachlorophenol
- 13 Silvex
- 14 2,4,5-T
- 15 Chloramben
- 16 2,4-DB
- 17 Dinoseb
- 18 Bentazon
- 19 Dacthal
- 20 Picrolam
- 21 Acifluorfen

