

Jupiter® 300 C4 - Comparison of Tetrahydrofuran Organic Mixtures

Column: Jupiter® 5 µm C4 300 Å, LC Column 150 x 4.6 mm, Ea

Dimensions: 150 x 4.6 mm ID

Order No: 00F-4167-E0

Elution Type: Gradient

Eluent A: 0.1% TFA in Water

Eluent B: 90% ACN 0.09% TFA in Water

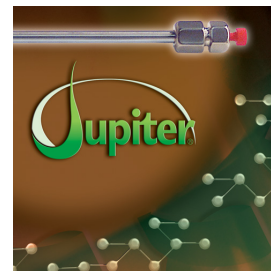
| Gradient Profile: | Step No. | Time (min) | Pct A | Pct B |
|-------------------|----------|------------|-------|-------|
| | 1 | 0 | 80 | 20 |
| | 2 | 25 | 45 | 55 |

Flow Rate: 1 mL/min

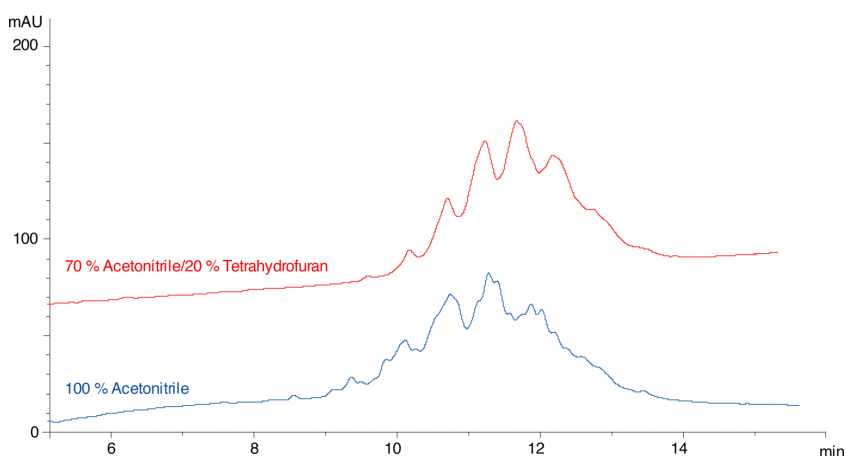
Col. Temp.: 45 °C

Detection: UV-Vis Abs.-Variable Wave.(UV) @ 214 nm (ambient)

Analyst Note: 16195 Reversed phase runs of PEGylated beta lactoglobulin using different organic mobile phase compositions on Jupiter 300 C4. 70% Acetonitrile/30% tetrahydrofuran was substituted for the organic portion of the mobile phase. For various proteins tested the addition of THF slightly decreased the



Products used in this application:



ANALYTES:

- 1 PEGylated beta-Lactoglobulin

