

GC Application

ID No.: 16212

Fast ASTM D3710 on ZB-1

Column: Zebtron[™] ZB-1, GC Cap. Column 15 m x 0.53 mm x 0.50 μ m, Ea

Phase: 100% Dimethylpolysiloxane

Dimensions: 15 meters x 0.53 mm x 0.5 μ m

Order No: 7EK-G001-17

Oven Profile: 35 °C for 1 min. to 200 °C at 35 °C/min. for 1 min.

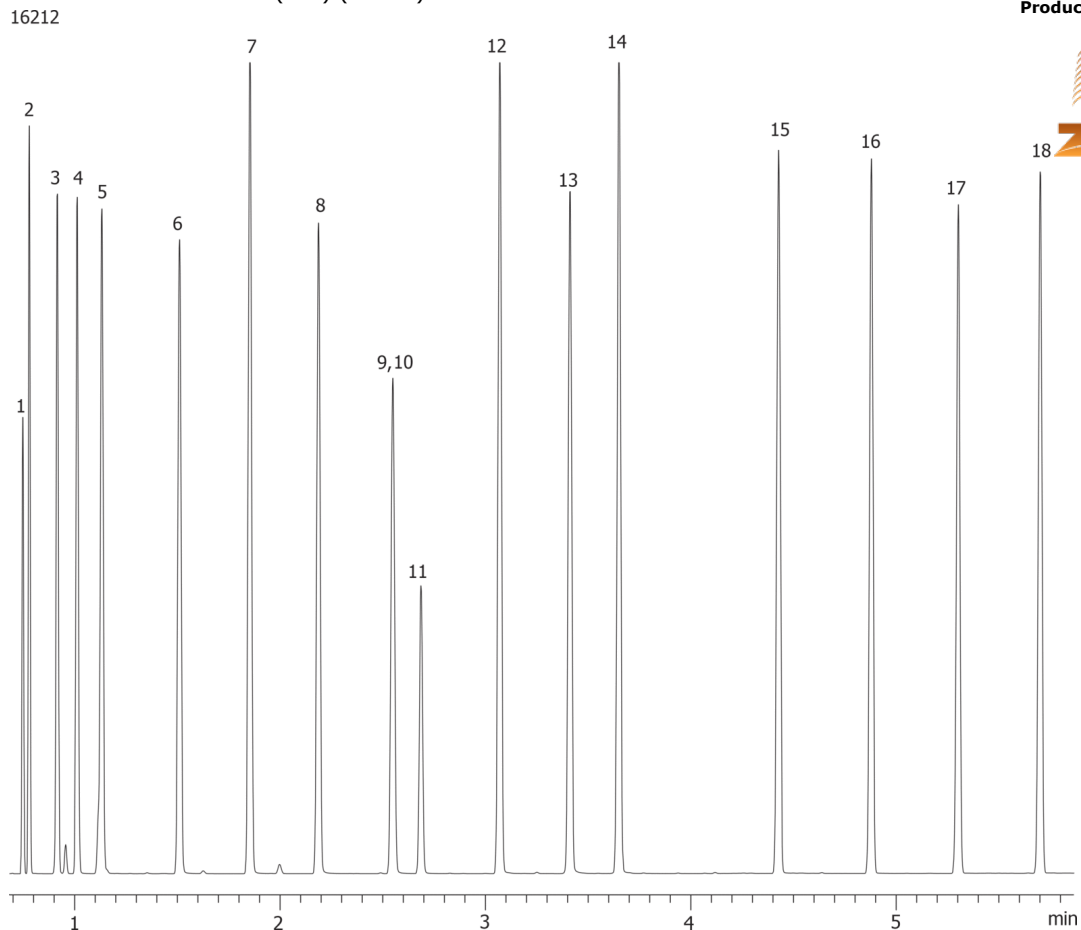
Carrier Gas: Constant Pressure Helium, 7 mL/min

Injection: Split 50:1 0.1 μ L @ 200°C

Detection: Flame Ionization (FID) (220°C)



Products used in this application:



Fast ASTM D3710 on ZB-1

ANALYTES:

- 1 Isopentane
- 2 Pentane
- 3 2-Methylpentane
- 4 Hexane
- 5 2,4-Dimethylpentane
- 6 Heptane
- 7 Toluene
- 8 Octane
- 9 m-Xylene
- 10 p-Xylene
- 11 o-Xylene
- 12 Propylbenzene
- 13 Decane
- 14 Butylbenzene
- 15 Dodecane
- 16 Tridecane
- 17 Tetradecane
- 18 Pentadecane

