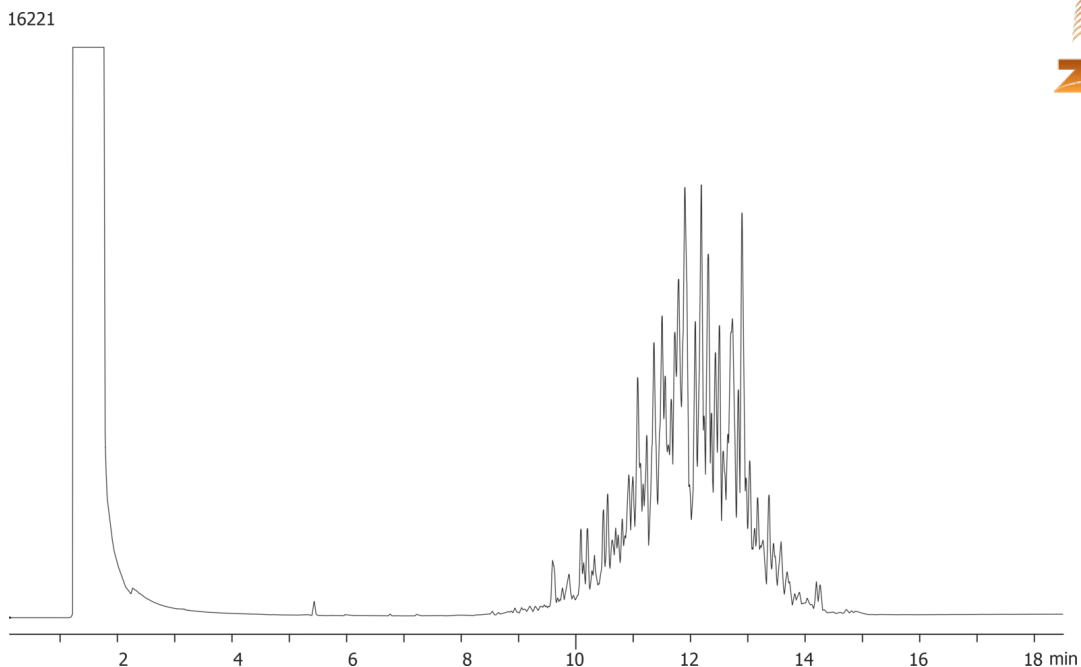


EPA 8081: Toxaphene on ZB-MR1**Column:** Zebtron[™] ZB-MultiResidue[™]-1, GC Cap. Column 30 m x 0.53 mm x 0.50 μ m, Ea**Phase:** Unknown or Proprietary**Dimensions:** 30 meters x 0.53 mm x 0.5 μ m**Order No:** 7HK-G016-17**Oven Profile:** 125 °C for 0.5 min to 320 °C at 15 °C/min for 5 min**Carrier Gas:** Constant Flow Helium, 5 mL/min**Injection:** Splitless :1 1 μ L @ 280°C**Detection:** Electron Capture (ECD) (320°C)**Analyst Note:** Toxaphene is 25ppm.**Products used in this application:****ANALYTES:****1** Toxaphene